

MAY 28 1997

LAND CORNER RECORDATION CERTIFICATE
FILING REQUIREMENT of Act 74, Mich. P.A. 1970NEWAYGO COUNTY
REGISTER OF DEEDS
LINDA M. BROWN

'97 FEB 12 PM 4

For corners in
Newaygo
(County)

Located In:

Corner Code #

Linda M. Brown

1. Public Land Survey

T 13N R 12W

T 13N R 13W

T R

T R

2. Property Controlling
in Section

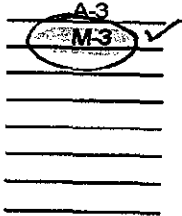
S T R

S T R

3. Miscellaneous
Property in Sec.

S T R

S T R



VOL. 1

PAGE 237

4. Lot No. _____, Recorded Plat _____
5. Private Claims _____

Register of Deeds Stamp & File Number

	A	B	C	D	E	F	G	H	I	J	K	L	M
2													
3													
4													
5													
6													
7													
8													
9													
10													
11													
12													
13													

I, Norman L. Ochs, in a field survey on December 13, 1996, do hereby certify that under requirements of P. A. 74, Michigan P.A. of 1970, the corner points mentioned in lines 1 and 2 above were in conformance with regulations and rules therefore as required in the current manual of survey instructions of the United States Department of the Interior, Bureau of Land Management or by a decree of a Court of Law and/or that the corner points mentioned in lines 3, 4 and 5 above were in conformance with the rules of the Michigan Board of Land Surveyors or by a Decree of a Court of Law, established, re-established, monumented, re-monumented, recovered, found as expressed below:

Note: Not more than 4 corners, all in the same town and range, may be recorded on this certificate.

Northwest Corner, Section 7, Everett Township, Newaygo County, Michigan
Northeast Corner, Section 12, Sherman Township, Newaygo County, Michigan

A. DESCRIPTION OF ORIGINAL MONUMENT AND ACCESSORIES AND/OR SUBSEQUENT RESTORATION:

G.L.O. John Hodgson 1838
18" Pine N44½°E 41 Links (27.06') #1
10" Pine S18°E 34 Links (22.44') #2

Delos G. Anderson (County Surveyor)
Book A Page 198 July 19, 1897
22" Pine West 22 Links (14.52') #3
14" Pine S22°W 32 Links (21.12') #4

Ralph A. Smith R.L.S. #3421
November 15, 1958 Angle Iron Found
14" White Oak N88°E 33.2' #8
20" White Oak N45°E 48.8' #9
12" Red Oak N35°W 48.2' #10

Ralph A. Smith R.L.S. #3421
Book 68 Page 64 1950
Angle Iron (fish plate)
24" White Oak N30°E 49.5' #7
10" White Oak N85°E 33.6' #8

Lyle S. Shepherd R.L.S. #503
Book 54 Page 79 March 20, 1925
Pine Stump N69°E 41.5' #5
Pine Stump N22°15'W 24' #6

OVER ↗

B. DESCRIPTION OF CORNER EVIDENCE FOUND AND/OR METHOD APPLIED IN RESTORING OR REESTABLISHING CORNER:

Found Robert A. Griffin's monument 6" below the surface and the centerline of the North and South dirt road is 5 feet East and on Pine Tree row going to the West and on fence line going West and the condition of the recorded witnesses are: #1 thru #7 gone, #8 thru #11 good condition, #12 gone, #13 good condition.

C. DESCRIPTION OF MONUMENT FOR CORNER AND ACCESSORIES ESTABLISHED TO PERPETUATE LOCATING THE POSITION OF THE CORNER:

Accepted Robert A. Griffin's concrete monument as a substantial marker for the section corner and is accepted as a careful and faithful reestablishment of the original corner.

20" White Oak N85°E 33.6' Set spike and tag in North side of tree. #8
36" White Oak N47°E 48.8' (face) 49.5' Set spike and tag in Northwest side of tree. #9
26" Red Oak N35°W 48.2' Set spike and tag in Southwest side of tree. #10
22" White Oak S35°E 52.94' (face) 54.43' Set spike and tag in Southwest side of tree. #11
Centerline North and South dirt road East 5' #13

Signed by Norman L. Ochs Date December 20, 1996

Surveyor's Michigan License No. 22439

Approved by Peer Review Group On December 23, 1996
Norman L. Ochs, County Representative.

Form approved by Michigan State Board of Land Surveyors, Jan 28, 1971
Revised May 14, 1975
Revised Jan., 1983



A. Description (cont.)

N.C.R.C. Sheet

24" Oak N30°E 49.5' #7

10" Oak N85°E 33.6' #8

Pine Stump N69°E 41.5' #5

Pine Stump N32°W 24' #6

David R. Greer R.L.S. #16042

1972

Found 2" X 2" Steel Angle Iron

15" White Oak Southeast 52.94' #11

15" White Oak East 32.92' #8

15" Black Oak Northwest 47.73' #10

20" White Oak Northeast 48.82' #9

Robert A. Griffin R.L.S. #13584

LCRC #454 August 13, 1977

Found Angle Iron in the North and South road from the witnesses by Ralph Smith. Set 5" Square by 36" concrete monument with brass cap.

14" White Oak N85°E 33.78' #8

4" X 7" Post East 33.09' #12

18" Black Oak N41°W 48.64' #10

D.N.R.

Found 5" Square Forest Service concrete monument

18" White Oak N85°E 32.9' #8

16" Red Oak N35°W 47.8' #10

18" White Oak S40°E 53.0' #11

4" Post East 33' #12

Centerline North and South dirt road East 5' #13