

LAND CORNER RECORDATION CERTIFICATE

Filing Requirement of Act 74, Mich. PA 1970

For Corners In:

Otsego
(County)

Located In

Corner Code #

1. Public Land Survey T _____ R _____
T _____ R _____
2. Property Controlling
in Section S 16 T 29N R 1W 15
S 16 T 29N R 1W 16
3. Miscellaneous
Property in Section S _____ T _____ R _____
S _____ T _____ R _____

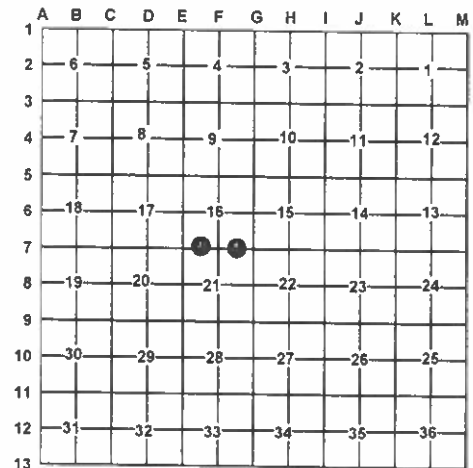
4. Lot No: _____ Recorded Plat: _____

5. Private Claims: _____

I, Carl T. Kiiskila, in a field survey on August 30, 2007 do hereby state that under requirements of PA 74, Michigan PA of 1970, the corner points mentioned in lines 1 and 2 above were in conformance with regulations and rules therefore as required in the current manual of survey instructions of the United States Department of the Interior, Bureau of Land Management or by a decree of a Court of Law and/or that the corner points mentioned in lines 3, 4 and 5 above were in conformance with the rules of the Michigan Board of Land Surveyors or by a Decree of a Court of Law; established, re-established, monumented, recovered, found as expressed below:

NOTE: Not more than 2 corners, all in the same town and range, may be recorded on this certificate.

Register of Deeds Stamp & File Number



A. Description of original monument and accessories and/or subsequent restoration:

15- This corner position was not established during the original Government survey.

16- This corner position was not established during the original Government survey.

B. Description of corner evidence found and/or method applies in restoring or re-establishing corner:

15- Established the Southwest corner of the Southeast quarter of the Southwest quarter of section 16 as per B.L.M. instructions for the subdivision of a section.

16- Established the Southwest corner of the Southeast quarter of the Southwest quarter of section 16 as per B.L.M. instructions for the subdivision of a section.

C. Description of monument for corner and accessories established to perpetuate locating the position of the corner:

15- Set a 5/8" X 32" rerod with P.S. cap #33981

Wit: Set nail and tag in E. Side of a 4" Oak S15°W 21.89'
Set nail and tag in N. Side of a 7" Jack Pine N87°W 28.79'
Set nail and tag in E. Side of a 12" Jack Pine N06°E 23.33'
Set nail and tag in NW Side of a 8" Jack Pine N60°E 23.07'
Set Carsonite Post North 1'±

16- Set a 5/8" X 32" rerod with P.S. cap #33981

Wit: Set a nail and tag in S. side of a 6" Jack Pine S60°E 29.57'
Set a nail and tag in NW side of a 5" R. Pine S35°W 47.60'
Set a nail and tag in W. side of a 5" Oak N08°E 9.33'
Set a nail and tag in S. side of a 5" Red Pine N80°W 25.21'
1/2" pin no cap S08°W 2.08'
Set Carsonite Post North 1'±

Signed by:

Carl T. Kiiskila

Date:

9-26-07

Surveyor's Michigan License No.:

33981

