

# LAND CORNER RECORDATION CERTIFICATE

Filing Requirement of Act 74, Mich. PA 1970

For Corners In:  
OTSEGO  
(County)

Located In

Corner Code #

1. Public Land Survey	T	R	
	T	R	
2. Property Controlling in Section	S 32	T 32N	R 1W 14
	S 32	T 32N	R 1W 16
3. Miscellaneous Property in Section	S	T	R
	S	T	R

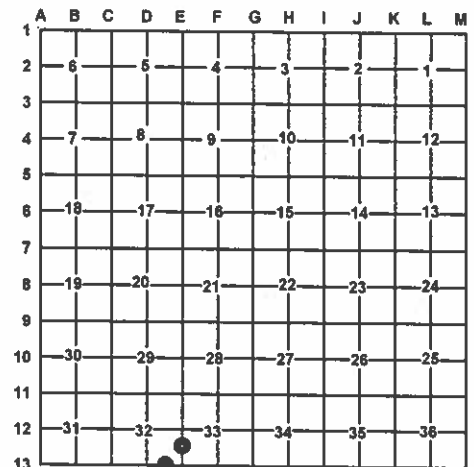
4. Lot No: Recorded Plat:

5. Private Claims:

I, Carl T. Kiiskila, in a field survey on January 7, 2010 do hereby state that under requirements of PA 74, Michigan PA of 1970, the corner points mentioned in lines 1 and 2 above were in conformance with regulations and rules therefore as required in the current manual of survey instructions of the United States Department of the Interior, Bureau of Land Management or by a decree of a Court of Law and/or that the corner points mentioned in lines 3, 4 and 5 above were in conformance with the rules of the Michigan Board of Land Surveyors or by a Decree of a Court of Law; established, re-established, monumented, recovered, found as expressed below:

**NOTE: Not more than 2 corners, all in the same town and range, may be recorded on this certificate.**

Register of Deeds Stamp & File Number



A. Description of original monument and accessories and/or subsequent restoration:

14 S 1/16 Cor. comm. to sec.'s 32 & 33, T32N,R1W

1936 - County Surveyor Record - Field notes - George F. DeLaMater, P.S.#2674 - Placed 1/2"x36" bar. No witnesses.

16 E 1/16 Cor. comm. to sec. 5, T31N,R1W & sec.32, T32N,R1W

1936 - County Surveyor Record - Field notes - George F. DeLaMater, P.S.#2674 - Set 1/2"x36" bar. W.Pine Stump 30" N56°E 7.1'

B. Description of corner evidence found and/or method applies in restoring or re-establishing corner:

14 S 1/16 Cor. comm. to sec.'s 32 & 33, T32N,R1W

Found 1/2" bar in tag alder swamp per 1936 CSR field notes by DeLaMater. Accepted found 1/2" bar as the best available evidence for the position of the corner. Added stamped 2" dia. aluminum cap on found bar. Found no other evidence to dispute the location for the corner.

16 E 1/16 Cor. comm. to sec. 5, T31N,R1W & sec.32, T32N,R1W

Set stamped 2" dia. aluminum cap on 5/8"x48" rebar per standard BLM procedure. Found badly bent 1/2" bar 0.35' from calculated position (probably DeLaMater's). Found no other evidence to dispute the Location for the corner.

C. Description of monument for corner and accessories established to perpetuate locating the position of the corner:

14 S 1/16 Cor. comm. to sec.'s 32 & 33, T32N,R1W

Stamped 2" dia. aluminum cap on 1/2"x36" iron bar.

Wit: North 67' to West bank of Black River  
No other witnesses available.  
Set Blue Carsonite Post w/location tag 1' North

16 E 1/16 Cor. comm. to sec. 5, T31N,R1W & sec.32, T32N,R1W

Stamped 2" dia. aluminum cap on 5/8"x48" rebar.

Wit: N70°E 5.80' to set N&T on S side 7" Ash  
S12°E 27.23' to set N&T on W side 3" B.Spruce  
S88°W 51.66' to set N&T on N side 8" Ash  
N16°W 32.87' to set N&T on W side 5" Aspen  
N45°E 6.43' to set N&T on N side 4" B.Spruce  
Set Blue Carsonite Post w/location tag 1' North

Carl T. Kiiskila

Surveyor's Michigan License No.: 33981



10-26-10