

DEC 01 1998

SECTION

OTTAWA COUNTY REMONUMENTATION

LAND CORNER RECORDATION CERTIFICATE  
Filing Requirement of Act 74, Mich. P.A. 1970

For corners in

OTTAWA

(County)

Located in:

Corner Code #

1. Public Land Survey

T\_\_\_R\_\_\_  
T\_\_\_R\_\_\_  
T\_\_\_R\_\_\_  
T\_\_\_R\_\_\_

A-2-3 South

Witness Cor for A-2

Allendale Twp

2. Property Controlling  
in Section

S6 T7N R14W

SEQUENTIAL  
CORNER #2

3. Miscellaneous  
Property in Sec.

S\_\_\_T\_\_\_R\_\_\_  
S\_\_\_T\_\_\_R\_\_\_

also T7N, R15W #3

4. Lot No. \_\_\_\_\_, Recorded Plat \_\_\_\_\_

5. Private Claims \_\_\_\_\_

RECORDED

98 SEP 29 PM 1:57

*Long Schultz*  
REGISTER OF DEEDS  
OTTAWA COUNTY, MI

Register of Deeds Stamp & File Number

I, Randal J. Vugteveen, in a field survey on June 4, 1998 do hereby state that under requirements of P.A. 74, Michigan P.A. of 1970, the corner points mentioned in lines 1 and 2 above were in conformance with regulations and rules therefore as required in the current manual of survey instructions of the United States Department of the Interior, Bureau of Land Management or by a decree of a Court of Law and/or that the corner points mentioned in lines 3, 4 and 5 above were in conformance with the rules of the Michigan Board of Land Surveyors or by a Decree of a Court of Law; established, re-established, monumented, recovered, found as expressed below:

NOTE: Not more than 2 corners, all in the same town and range, may be recorded on this certificate.

A. Description of original monument and accessories and/or subsequent restoration:

A-2 This corner was not set by the G.L.O.

B. Description of corner evidence found and/or method applied in restoring or reestablishing corner:

Reference Monument set on South side of the Grand River on a line between M-5 corner and M-1 corner Robinson Township

This position not established by original government surveyors. This monument is accepted as the best available evidence of the position of the West line of the SW 1/4 of Section 6, T7N, R14W.

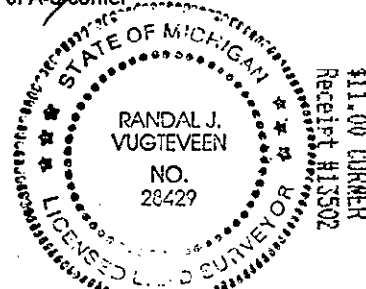
C. Description of monument for corner and accessories established to perpetuate locating the position of the corner:

A-2 Reference Monument set on South side of the Grand River on the West side Section 6, 2539.16' North of A-3 corner

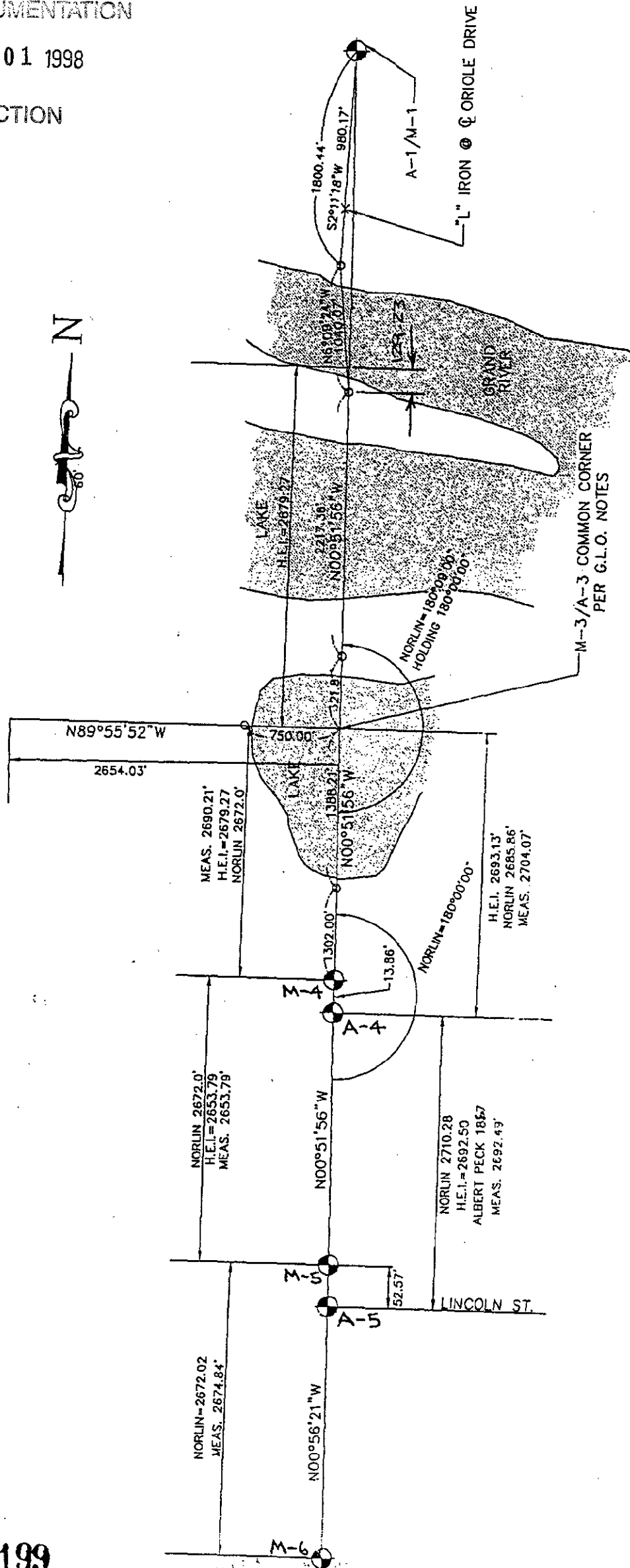
Set 3/4" X 36" Bar and Remon cap on small ridge above River  
Set Nail & Remon tag in South side quad 12" Maple Clump Az 310° 9.17'  
Set Nail & Remon tag in West side 26" white oak Az 195° 22.99'  
Set Nail & Remon tag in South side Twin 14" ASH Az 125° 4.67'  
Set Nail & Remon tag in West side 16" Poplar Az 18° 42.30'  
Water's edge Grand River (Normal Channel) Az 0° 85.0' +-

Signed by *Randal J. Vugteveen*  
Surveyor's Michigan License No. 28129

Date SEPT 24, 1998



## SECTION



M-5 TO M-1  
TOTAL =  $50^{\circ} 51'56''$ E 10716.70'  
H.E.I. = 10,717.05'

NOR-LIN. INFORMATION FROM FIELD BOOK  
#361 OTTAWA COUNTY SURVEYOR'S RECORDS  
THEO. NOR. LIN. MAY 1920