

**OTTAWA COUNTY REMONUMENTATION  
LAND CORNER RECORDATION CERTIFICATE**  
Filing Requirement of Act 74, Mich. P.A. 1970

For corners in

Ottawa  
(County)

Located In:  
Grand Haven  
Twp.

Corner Code #

1. Public Land Survey

T8N R16W

K-10

T R

Reference corner  
to K-10 and  
Meander Post  
1832 Survey

T R

T R

2. Property Controlling  
in Section

S T R

S T R

3. Miscellaneous  
Property in Sec.

S T R

S T R

Dep. #1

RECORDED

96 DEC 20 PM 12:20

*Edythe L. Ballman*  
REGISTER OF DEEDS  
OTTAWA COUNTY, MI

Register of Deeds Stamp & File Number

4. Lot No. \_\_\_\_\_, Recorded Plat \_\_\_\_\_  
5. Private Claims \_\_\_\_\_

I, Carl P. Englert, in a field survey on 12/12, 1996 do hereby state that under requirements of P.A. 74, Michigan P.A. of 1970, the corner points mentioned in lines 1 and 2 above were in conformance with regulations and rules therefore as required in the current manual of survey instructions of the United States Department of the Interior, Bureau of Land Management or by a decree of a Court of Law and/or that the corner points mentioned in lines 3, 4 and 5 above were in conformance with the rules of the Michigan Board of Land Surveyors or by a Decree of a Court of Law; established, re-established, monumented, recovered, found as expressed below:

NOTE: Not more than 2 corners, all in the same town and range, may be recorded on this certificate.

1	A	B	C	D	E	F	G	H	I	J	K	L	M
2	6	5	4	3	2	1							
3													
4	7	8	9	10	11	12							
5													
6	18	17	16	15	14	13							
7													
8	19	20	21	22	23	24							
9													
10	30	29	28	27	26	25							
11													
12	31	32	33	34	35	36							
13													

A. Description of original monument and accessories and/or subsequent restoration:

K-10 1/4 corner common to Sections 25 and 26  
G.L.O. 1832, Britain  
40.00 Set 1/2 mile Post in Marsh  
45.84 Grand River and set Meander Post  
Raised a Mound, no Bearing Trees

P.A. 345 OTTAWA COUNTY  
PEER APPROVED 12-9-96

*J.D.N.*

B. Description of corner evidence found and/or method applied in restoring or reestablishing corner:

K-10 1/4 corner common to Sections 25 and 26  
Corner and Meander Post Lost  
Established Corner and Meander Post by measuring North with 1832 chain to intersect line from K-9 to found Iron Spike 1319.70' South of K-9. This is also the East line of Oak Park Plat and the West line of Plumwood Sub.  
See Other Side

Accepted as a careful and faithful reestablishment of the position of the original corner.

C. Description of monument for corner and accessories established to perpetuate locating the position of the corner:

K-10 1/4 corner common to Sections 25 and 26  
Reference corner on line from K-11 to position of K-10  
Set 3/4"x3" Iron Bar with O.C. Remon Cap  
O.C. Remon tag & nail in E. Side 4" Alder North 26.67'  
O.C. Remon tag & nail in S. Side 12" Willow S73°E 78.25'  
O.C. Remon tag & nail in S.W. Side 7" Ash S28°E 88.80'  
O.C. Remon tag & nail in E. Side N. Branch 4" Trip. Willow S02°E 108.60'

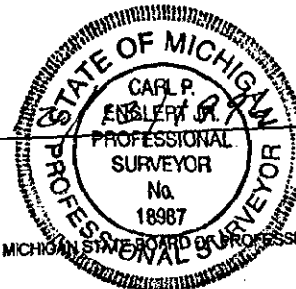
\$ 11.00 CORNER  
\$ 1.00 PHOTO  
\$ 1.00 PHOTO

Signed by

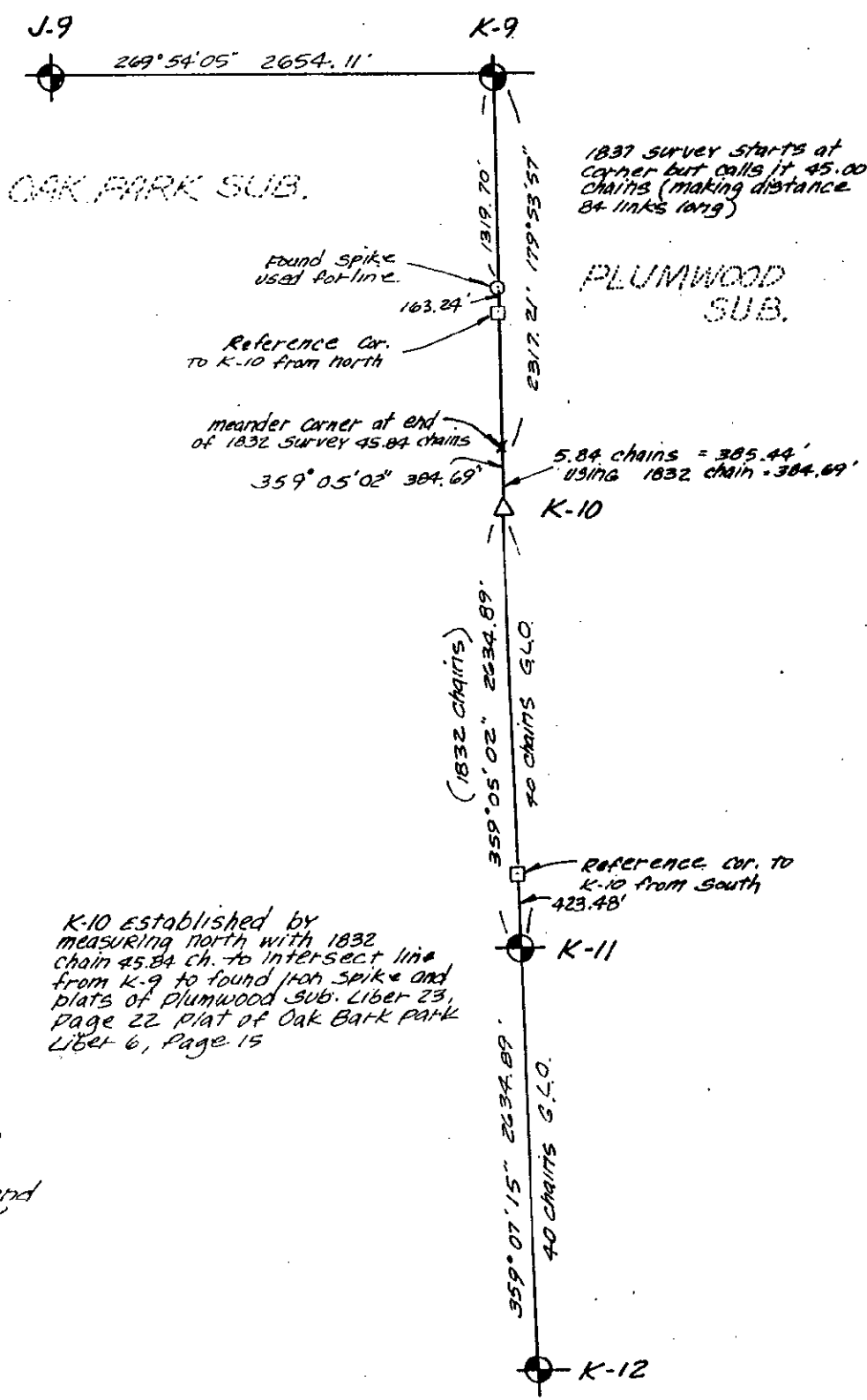
*Carl P. Englert*  
18987

Surveyor's Michigan License No.

Date



FORM APPROVED BY MICHIGAN STATE BOARD OF PROFESSIONAL SURVEYORS, JAN. 28, 1971  
REVISED MAY 14, 1975  
REVISED JAN., 1983  
REVISED OCT., 1985



Scale: 1" = 1000'

