

SURVEY & REMONUMENTATION

FEB 27 1998

Ottawa County Remonumentation

SECTION

LAND CORNER RECORDATION CERTIFICATE Filing Requirement of Act 74, Mich. P.A. 1970

For corners in

Ottawa
(County)

Located in:

Corner Code #

- | | | |
|---------------------------------------|--------------------------------------|---------------------|
| 1. Public Land Survey | T <u>9N</u> R <u>13W</u> | F, G-6 |
| | T <u>9N</u> R <u>13W</u> | E. 1/4 COR. SEC. 16 |
| | T <u>9N</u> R <u>13W</u> | REFERENCE MONUMENT |
| | T <u>9N</u> R <u>13W</u> | CHESTER TWP. |
| 2. Property Controlling
in Section | S <u>16</u> T <u>9N</u> R <u>13W</u> | SEQUENTIAL |
| | S <u>16</u> T <u>9N</u> R <u>13W</u> | CORNER #1 |
| 3. Miscellaneous
Property in Sec. | S <u>16</u> T <u>9N</u> R <u>13W</u> | |
| | S <u>16</u> T <u>9N</u> R <u>13W</u> | |

RECORDED

97 DEC -8 AM 11:39

Ray J. Rosema
REGISTER OF DEEDS
OTTAWA COUNTY, MI

Register of Deeds Stamp & File Number

4. Lot No. _____, Recorded Plat _____
5. Private Claims _____

Maurice J. Rosema Nov. 28 97
I, _____, in a field survey on _____, 19 _____ do hereby state that under requirements of P.A. 74, Michigan P.A. of 1970, the corner points mentioned in lines 1 and 2 above were in conformance with regulations and rules therefore as required in the current manual of survey instructions of the United States Department of the Interior, Bureau of Land Management or by a decree of a Court of Law and/or that the corner points mentioned in lines 3, 4 and 5 above were in conformance with the rules of the Michigan Board of Land Surveyors or by a Decree of a Court of Law; established, re-established, monumented, recovered, found as expressed below:

NOTE: Not more than 2 corners, all in the same town and range, may be recorded on this certificate.

	A	B	C	D	E	F	G	H	I	J	K	L	M
1													
2	6		5		4		3		2		1		
3													
4	7		8		9		10		11		12		
5													
6	18		17		16		15		14		13		
7													
8	19		20		21		22		23		24		
9													
10	30		29		28		27		26		25		
11													
12	31		32		33		34		35		36		
13													

A. Description of original monument and accessories and/or subsequent restoration:

G-6

This corner was not set by GLO since it falls in lake, they traversed the section line between G-5 and G-7 (see map on reverse side for method of determining G-6)

B. Description of corner evidence found and/or method applied in restoring or reestablishing corner:

G-6

Set 5/8" X 3' steel rod with OC remon. cap on line between G-6 and F-6

G-6 - E 1458.22'

F-6 - W 1193.04'

See sketch on reverse side.

P.A. 345 OTTAWA COUNTY

PEER APPROVED 12-1-97

I hereby accept this corner as a correct and accurate position of the section corner.

C. Description of monument for corner and accessories established to perpetuate locating the position of the corner:

G-6

5/8" x 3' steel rod with OC remon. cap on line between G-6 and F-6, 1458.22' W of G-6

Set nail and remon. tag in NE side 12" Pine - N38°W 61.56'

Set nail and remon. tag in NW side P pole - N56°E 69.78'

NE cor. (foundation) of house no. 2776 - S9°W 85.04'

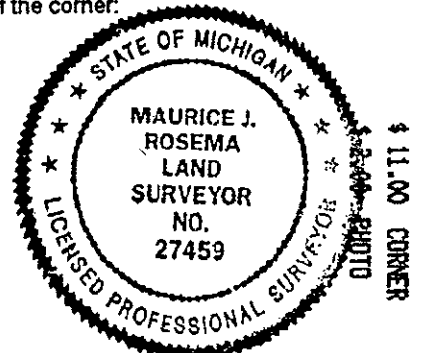
NE gar. no. 2764 cor. (siding) - N89°E 109.54'

NW cor. brick chimney on hse. no. 2764 - S41°E 40.60'

NE cor. gar. no. 2776 - S39°W 48.47'

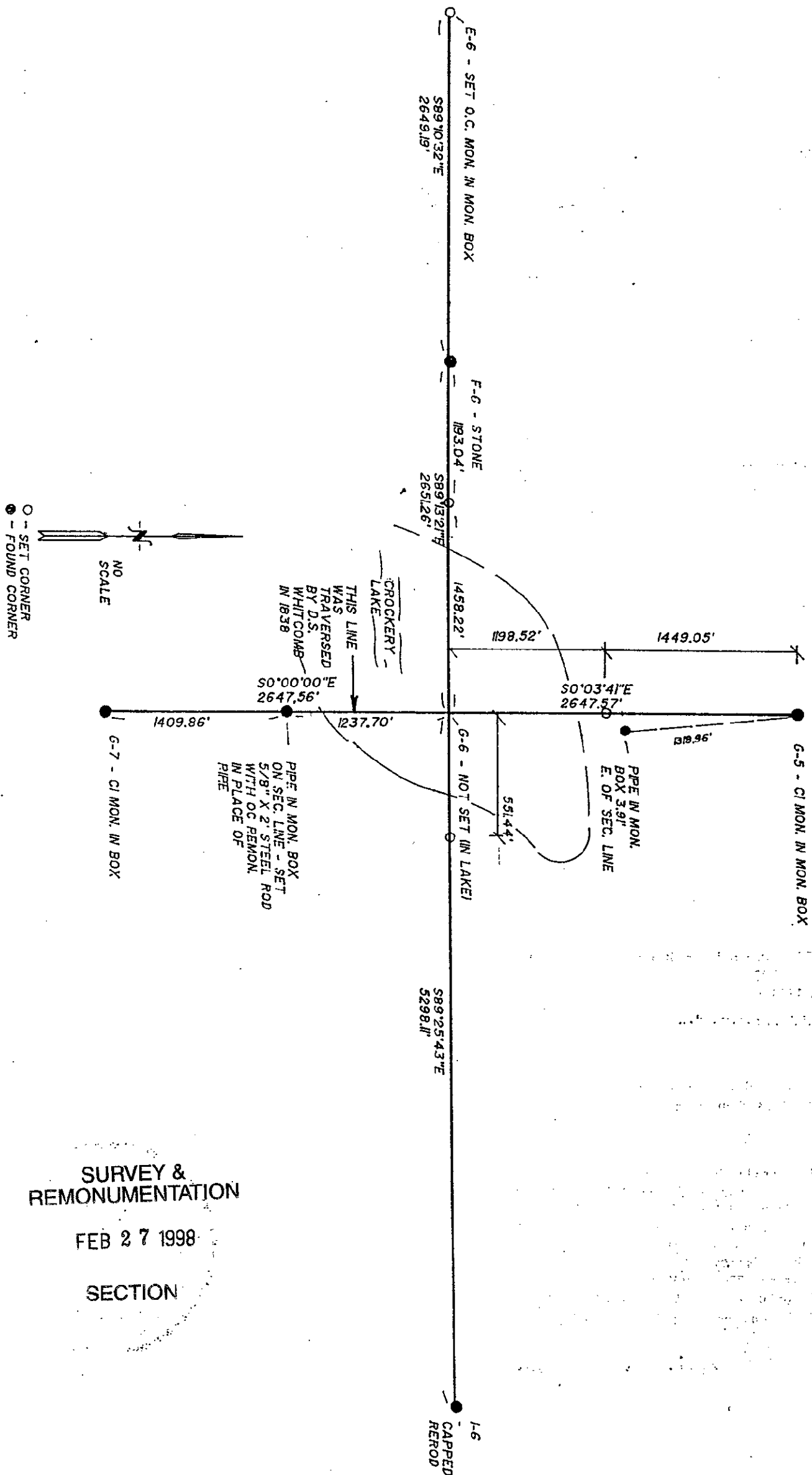
Centerline of bit. conc. Crockery Shores Road - N 76'

This point lies on approx prop. line between hse. no. 2776 and 2764 Crockery Shores Road



Signed by Maurice J. Rosema
Surveyor's Michigan License No. 27459

Date Dec. 1, 1997



SURVEY &
REMONUMENTATION

FEB 27 1998

SECTION