

# SURVEY & REMONUMENTATION

FEB 27 1998

## Ottawa County Remonumentation LAND CORNER RECORDATION CERTIFICATE Filing Requirement of Act 74, Mich. P.A. 1970

### SECTION

For corners in

Ottawa  
(County)

Located in:

Corner Code #

1. Public Land Survey

9N 13W

T R

G-5, 6

T R

E. 1/4 COR. SEC. 16

T R

REFERENCE MONUMENT

T R

CHESTER TWP.

2. Property Controlling  
in Section

S 15 T9N R13W

SEQUENTIAL

S 16 T9N R13W

CORNER #2

3. Miscellaneous  
Property in Sec.

S T R

S T R

RECORDED

97 DEC -8 AM 11:39

*Ray Roberts*  
REGISTER OF DEEDS  
OTTAWA COUNTY, MI

Register of Deeds Stamp & File Number

4. Lot No. \_\_\_\_\_, Recorded Plat \_\_\_\_\_  
5. Private Claims \_\_\_\_\_

	A	B	C	D	E	F	G	H	I	J	K	L	M
1													
2	6		5		4		3		2		1		
3													
4	7		8		9		10		11		12		
5													
6	18		17		16		15		14		13		
7													
8	19		20		21		22		23		24		
9													
10	30		29		28		27		26		25		
11													
12	31		32		33		34		35		36		
13													

Maurice J. Rosema  
I, \_\_\_\_\_, in a field survey on Nov. 28, 1997 do hereby state that under requirements of P.A. 74, Michigan P.A. of 1970, the corner points mentioned in lines 1 and 2 above were in conformance with regulations and rules therefore as required in the current manual of survey instructions of the United States Department of the Interior, Bureau of Land Management or by a decree of a Court of Law and /or that the corner points mentioned in lines 3, 4 and 5 above were in conformance with the rules of the Michigan Board of Land Surveyors or by a Decree of a Court of Law; established, re-established, monumented, recovered, found as expressed below.

NOTE: Not more than 2 corners, all in the same town and range, may be recorded on this certificate.

A. Description of original monument and accessories and/or subsequent restoration:

G-6

This corner was not set by GLO since it falls in lake, they traversed the section line between G-5 and G-7 (see map on reverse side for method of determining G-6)

B. Description of corner evidence found and/or method applied in restoring or reestablishing corner:

G-6

Set 5/8" X 2' steel rod with OC remon. cap and mon. box on approx. centerline of NE-SW bit. conc. road on line between G-6 and G-5

G-6 - S 1198.52'

G-5 - N 1449.05'

See sketch on reverse side.

P.A. 345 OTTAWA COUNTY

PEER APPROVED 12-1-97

*YDR*

I hereby accept this corner as a correct and accurate position of the section corner.

C. Description of monument for corner and accessories established to perpetuate locating the position of the corner:

G-6

5/8" x 2" steel rod with OC remon. cap in mon. box on line between G-6 and G-5, 1198.52 feet N of G-6

Set nail and remon. tag in S side 10" Spruce - N86°W 42.82'

Set nail and remon. tag in E side 18" Pine - N27°W 57.75'

Set nail and remon. tag in S side 18" Pine - N52°E 65.54'

Centerline of base of steel fc post (at W end fc) - N84°E 38.77'

Set nail and remon. tag in W side 24" Oak - S31°E 62.51'

At approx. centerline of bit. conc. road to SW

Centerline of N-S bit. conc. road - E 5'



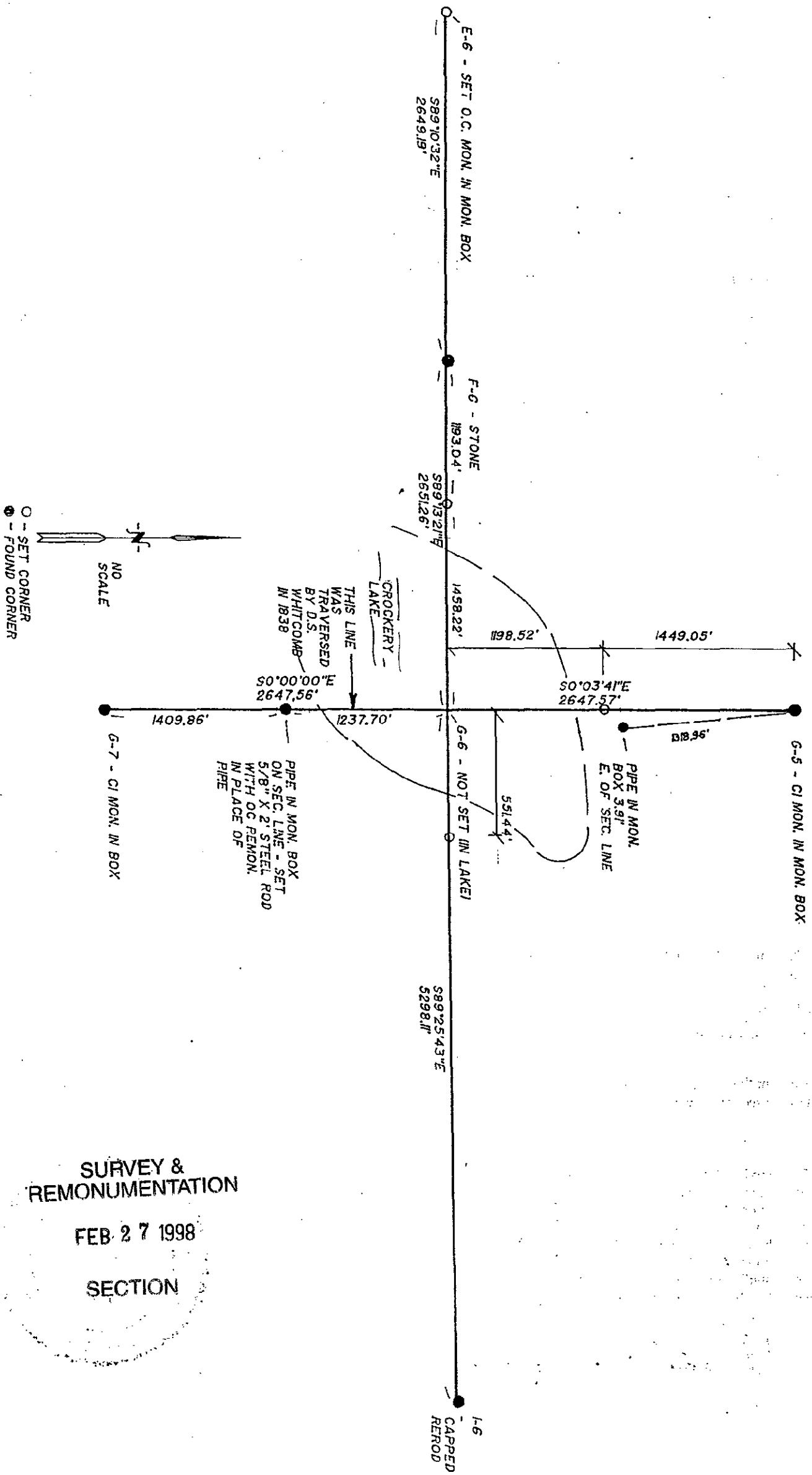
Signed by

*Maurice J. Rosema*

Surveyor's Michigan License No.

27459

Date Dec. 1, 1997



SURVEY &  
 REMONUMENTATION  
 FEB 27 1998  
 SECTION