

# SURVEY & REMONUMENTATION

FEB 27 1998

## Ottawa County Remonumentation LAND CORNER RECORDATION CERTIFICATE Filing Requirement of Act 74, Mich. P.A. 1970

For corners in

SECTION

RECORDED

97 DEC -8 AM 11:41

*Ray J. Rosema*  
REGISTER OF DEEDS  
OTTAWA COUNTY, MI

Ottawa (County)	Located In:	Corner Code #
1. Public Land Survey	9N 13W T___ R___ T___ R___ T___ R___ T___ R___	G-7, 6 E. 1/4 COR. SEC. 16 REFERENCE MONUMENT CHESTER TWP.
2. Property Controlling in Section	S15 T9N R13W S16 T9N R13W	SEQUENTIAL CORNER #4
3. Miscellaneous Property in Sec.	S___ T___ R___ S___ T___ R___	

Register of Deeds Stamp & File Number

4. Lot No. \_\_\_\_\_, Recorded Plat \_\_\_\_\_  
5. Private Claims \_\_\_\_\_

Maurice J. Rosema Nov. 28 97  
I, \_\_\_\_\_, in a field survey on \_\_\_\_\_, 19\_\_\_\_ do hereby state that under requirements of P.A. 74, Michigan P.A. of 1970, the corner points mentioned in lines 1 and 2 above were in conformance with regulations and rules therefore as required in the current manual of survey instructions of the United States Department of the Interior, Bureau of Land Management or by a decree of a Court of Law and/or that the corner points mentioned in lines 3, 4 and 5 above were in conformance with the rules of the Michigan Board of Land Surveyors or by a Decree of a Court of Law; established, re-established, monumented, recovered, found as expressed below:

NOTE: Not more than 2 corners, all in the same town and range, may be recorded on this certificate.

A	B	C	D	E	F	G	H	I	J	K	L	M
2	6	5	4	3	2	1						
3												
4	7	8	9	10	11	12						
5												
6	18	17	16	15	14	13						
7												
8	19	20	21	22	23	24						
9												
10	30	29	28	27	26	25						
11												
12	31	32	33	34	35	36						
13												

A. Description of original monument and accessories and/or subsequent restoration:

G-6

This corner was not set by GLO since it falls in lake, they traversed the section line between G-5 and G-7 (see map on reverse side for method of determining G-6)

B. Description of corner evidence found and/or method applied in restoring or reestablishing corner:

G-6

Replaced pipe in mon. box with 5/8" X 2' steel rod with OC remon. cap on approx. centerline of S-NE bit. conc. road between G-6 and G-7

G-6 - N 1237.70'

G-7 - S 1409.86'

See sketch on reverse side.

I hereby accept this corner as a correct and accurate position of the section corner.

P.A. 345 OTTAWA COUNTY  
PEER APPROVED 12-1-97  
*YDZ*

C. Description of monument for corner and accessories established to perpetuate locating the position of the corner:

G-6

5/8" x 2" steel rod with OC remon. cap in mon. box on line between G-6 and G-7, 1237.70' S of G-6

Set nail and remon. tag in N side P pole - S47°E 44.45'

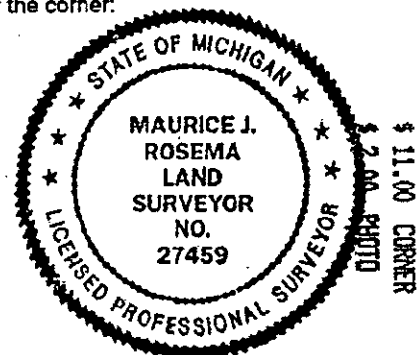
Set nail and remon. tag in S side 36" Willow - S76°W 53.65'

Set nail and remon. tag in W side 14" Ash - N26°W 67.78'

Set nail and remon. tag in E side P pole - N25°E 87.72'

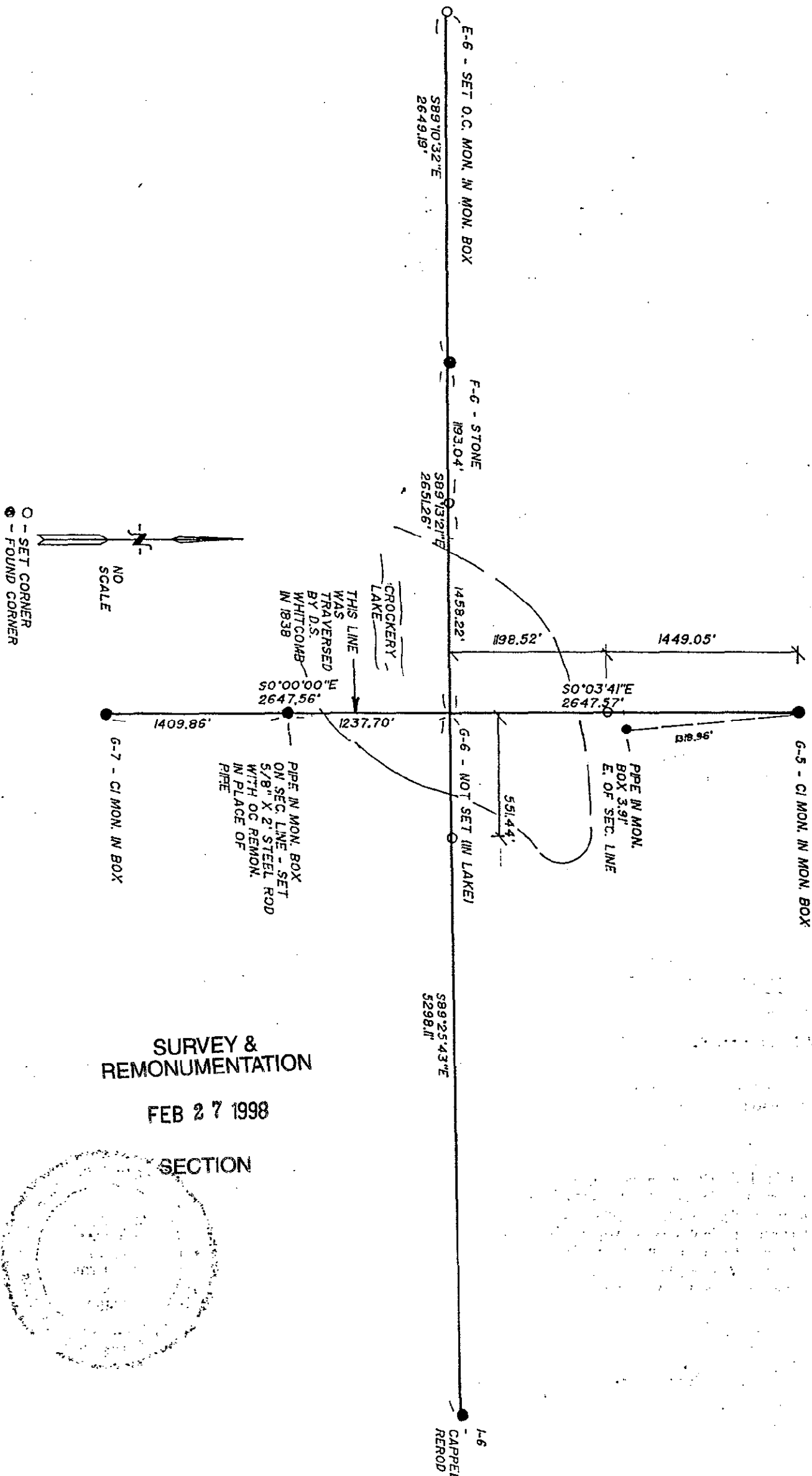
On centerline of bit. conc. road to S and NE

Centerline of bit. conc. road to W - N 31'



Signed by *Maurice J. Rosema*  
Surveyor's Michigan License No. 27459

Date Dec. 1, 1997



# SURVEY & REMONUMENTATION

FEB 27 1998

SECTION

