

LAND CORNER RECORDATION CERTIFICATE

Filing Requirement of Act 74, Mich. PA 1970

For Corners In:
Presque Isle
(County)

Located In

Corner Code #

1. Public Land Survey T 33N R 2E E-11
T 33N R 2E D-9

2. Property Controlling in Section S T R

3. Miscellaneous Property in Section S T R
S T R

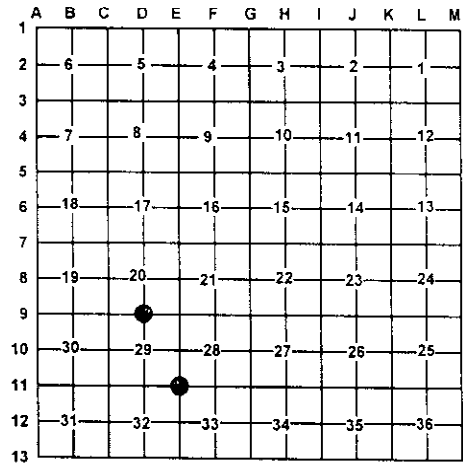
4. Lot No: Recorded Plat:

5. Private Claims:

I, Carl T. Kiiskila, in a field survey on August 6, 2002 do hereby state that under requirements of PA 74, Michigan PA of 1970, the corner points mentioned in lines 1 and 2 above were in conformance with regulations and rules therefore as required in the current manual of survey instructions of the United States Department of the Interior, Bureau of Land Management or by a decree of a Court of Law and/or that the corner points mentioned in lines 3, 4 and 5 above were in conformance with the rules of the Michigan Board of Land Surveyors or by a Decree of a Court of Law; established, re-established, monumented, recovered, found as expressed below:

NOTE: Not more than 2 corners, all in the same town and range, may be recorded on this certificate.

Register of Deeds Stamp & File Number



A. Description of original monument and accessories and/or subsequent restoration:

E-11 G.L.O. G.H. Cannon, September 1851, Set post for corner of sections 28,29,32, and 33.
Wit: Yellow Pine 24" N48°W 10 links
Yellow Pine 20" SE 36 links

Michigan Department of Conservation surveyor Marcus Schaaf R.L.S. #3104 sunk iron for corner while surveying in the area circa 1940. No witnesses or type of monument given.

Perla Stout Associates, P.C. Found a 2" Pipe for corner while surveying in the area in 1978. Wit: N78°E 4" Oak 29.01', N12°W 10" Oak 42.80', N45°W 10" Oak 55.33'.

Page 612 Presque Isle Corner Records, Delmer, Porter R.L.S. #15410 witnessed 2" pipe for corner. N12°W 42.80' 10" Oak, N45°W 55.33' 10" Oak, N78°E 4" Oak.

D-9 G.L.O. September 1851, Set quarter section post
Wit: Yellow Pine 14 N70°W 3.02 links
White Pine 20 S10°E 2.62 links

Michigan Department of Conservation surveyor Marcus Schaaf R.L.S. #3104 sunk iron for corner while surveying in the area circa 1940. No witnesses or type of monument given.

Perla Stout Associates, P.C. Found a 2" pipe in concrete for corner. Wit: S. edge of River North 33.30', S18°E 10" dead Cedar 28.70', W. edge of River East 151.10'

B. Description of corner evidence found and/or method applies in restoring or re-establishing corner:

E-11 Found 2" pipe fitting Porter Survey's and Perla Stout Associates, P.C. surveys in section 29.

D-9 Found 8" X 8" concrete monument with 2" pipe, fitting Perla Stout Associates, P.C. survey in section 29.

C. Description of monument for corner and accessories established to perpetuate locating the position of the corner:

E-11 Found 2" pipe raised with 5/8" X 16" rerod
Wit: 6" Maple Clump S14°E 32.63'
5" Aspen N38°E 22.83'
6" Maple N62°W 36.02'
5" Aspen N85°W 13.97'

D-9 Found 8" X 8" concrete mon. w/ 2" pipe
Wit: *18" Tamarack S29°E 143.29'
24" White Pine S07°W 175.13'
Blue Carsonite Post North 1'
Center of creek East 168'±

* Nail w/ Bischer cap

Signed by:

Carl T. Kiiskila

Date:

8-26-02

Surveyor's Michigan License No.:

33981

