

# LAND CORNER RECORDATION CERTIFICATE

Filing Requirement of Act 74, Mich. PA 1970

For Corners In:  
Presque Isle  
(County)

Located In

Corner Code #

1. Public Land Survey	T	33N	R	4E	D-7
	T	33N	R	4E	D-8
2. Property Controlling in Section	S	T	R		
	S	T	R		
3. Miscellaneous Property in Section	S	T	R		
	S	T	R		

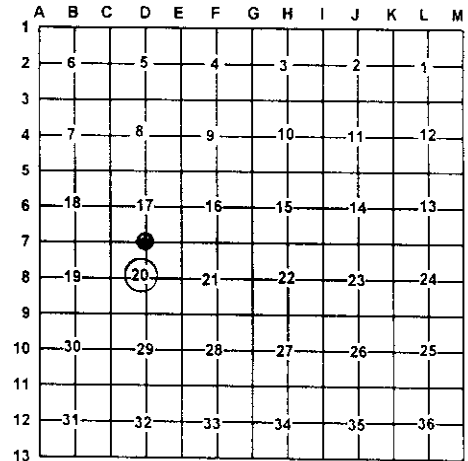
4. Lot No: \_\_\_\_\_ Recorded Plat: \_\_\_\_\_

5. Private Claims: \_\_\_\_\_

I, Carl T. Kiiskila, in a field survey on April 9, 2002 do hereby state that under requirements of PA 74, Michigan PA of 1970, the corner points mentioned in lines 1 and 2 above were in conformance with regulations and rules therefore as required in the current manual of survey instructions of the United States Department of the Interior, Bureau of Land Management or by a decree of a Court of Law and/or that the corner points mentioned in lines 3, 4 and 5 above were in conformance with the rules of the Michigan Board of Land Surveyors or by a Decree of a Court of Law; established, re-established, monumented, recovered, found as expressed below:

**NOTE: Not more than 2 corners, all in the same town and range, may be recorded on this certificate.**

Register of Deeds Stamp & File Number



A. Description of original monument and accessories and/or subsequent restoration:

D-7 G.L.O. Alfred Millerd 1855 set quarter section post  
Wit: Yellow Pine 16 N42°E 55 links  
Yellow Pine 15 S60°W 55 links

D-8 Ronald D. Bischer P.S. #22428 set the center of section 20 while doing a survey in section 20. No date given

Page 381, Presque Isle County Land Corner Records,  
Delmer E Porter P.S. #15410 found a 5/8" bar set by  
G. DeLaMater set a concrete monument with brass cap.  
Wit: N76°W 51.60' 14" Twin Maple  
S62°W 101.55' 15" Twin N. Pine  
S04°W 81.60' 30" N. Pine stump

B. Description of corner evidence found and/or method applies in restoring or re-establishing corner:

D-7 Found Presque Isle County Remon. Monument.

D-8 Found a 1/2" capped iron rod R. Bischer P.S. #22428.

C. Description of monument for corner and accessories established to perpetuate locating the position of the corner:

D-7 Found Presque Isle County Remon. Monument.

Wit: 14" Red Pine Stump N52°E 37.11'  
3" Jack Pine S03°E 10.78'  
3" Jack Pine S82°W 20.59'  
12" White Pine N19°W 88.90'

D-8 Found 1/2" capped rod R. Bischer P.S. #22428.

Wit: 8" Maple N10°W 12.65'  
9" Maple N89°W 48.73'  
7" Maple S66°E 37.95'  
7" Maple S59°W 28.30'  
Carsonite Post North 1±

Signed by:

Carl T. Kiiskila

Date:

8-26-02

Surveyor's Michigan License No.:

33981

