

LAND CORNER RECORDATION CERTIFICATE

Filing Requirement of Act 74, Mich. PA 1970

For Corners In:
Presque Isle
(County)

Located In

Corner Code #

1. Public Land Survey	T		R	
	T		R	
2. Property Controlling in Section	S 20	T 36N	R 2E	10
	S 20	T 36N	R 2E	15
3. Miscellaneous Property in Section	S	T	R	
	S	T	R	

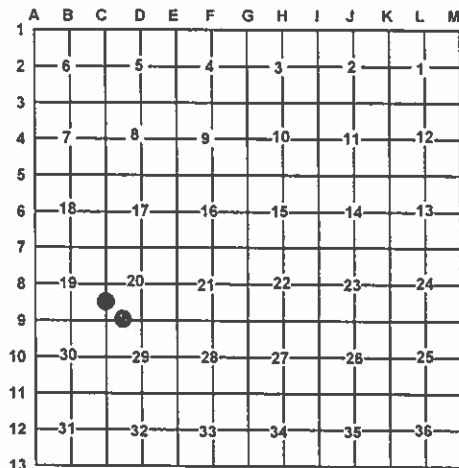
4. Lot No: Recorded Plat:

5. Private Claims:

I, Carl T. Kiiskila, in a field survey on August 11, 2009 do hereby state that under requirements of PA 74, Michigan PA of 1970, the corner points mentioned in lines 1 and 2 above were in conformance with regulations and rules therefore as required in the current manual of survey instructions of the United States Department of the Interior, Bureau of Land Management or by a decree of a Court of Law and/or that the corner points mentioned in lines 3, 4 and 5 above were in conformance with the rules of the Michigan Board of Land Surveyors or by a Decree of a Court of Law; established, re-established, monumented, recovered, found as expressed below:

NOTE: Not more than 2 corners, all in the same town and range, may be recorded on this certificate.

Register of Deeds Stamp & File Number



A. Description of original monument and accessories and/or subsequent restoration:

10 – S 1/16 Corner, common to Sec.'s 19 & 20, T36N, R2E

15 – W 1/16 Corner, common to sec.'s 20 & 29, T36N,R2E

1962 – Section break of sec. 19, T36N,R2E – Michigan Department of Conservation - Kenneth J.Ostling P.S.#10068 – Shows setting 1"x24" pipe by single proportion between C8 and C9.

1997 – Carl. T. Kiiskila,P.S.#33981 – Set 5/8"x32" CIR#33981 per standard BLM procedure. Added corner set to MDNR survey map #R-71-AA-1 N12°W 5.23' 10" W.Pine N75°E 23.25' 16" W.Pine S54°W 36.59' 7" W.Pine C/L E-W trail road 3.5' South. Set BCP 10' North

B. Description of corner evidence found and/or method applies in restoring or re-establishing corner:

10 – S 1/16 Corner, common to Sec.'s 19 & 20, T36N, R2E

15 – W 1/16 Corner, common to sec.'s 20 & 29, T36N,R2E

Found 1" galv. pipe per Ostling survey of section 19, in C/L of N-S 2-track. Lowered pipe 5" and added 1/2" P.S. cap#33981 in center of pipe. Accepted found pipe as the best available evidence for the position of the corner. Found no other evidence to dispute its location.

Found 5/8" CIR#33981 per 1997 Survey - also found badly bent 3/4" pipe 1.3' to SW of 5/8"CIR. BCP was gone to the North. Accepted found 5/8"CIR#33981 as the best available evidence for the position of the corner. Found no other evidence to dispute its location.

C. Description of monument for corner and accessories established to perpetuate locating the position of the corner:

10 – S 1/16 Corner, common to Sec.'s 19 & 20, T36N, R2E

15 – W 1/16 Corner, common to sec.'s 20 & 29, T36N,R2E

Fd. 1" galvanized pipe added 1/2"P.S.cap#33981 in center.

Found 5/8"x32"CIR#33981

Wit: N39°E 53.19' to set N&T on SE side 16" W.Pine
S44°E 30.19' to set N&T on NE side 6" W.Pine
S28°W 30.35' to set N&T on SE side 6" W. Pine
N17°W 30.90' to N&T on NE side 5" W.Pine
North 12' to C/L 2-track for cabin to West.
Set Blue Carsonite Post w/ location tag 15' West

Wit: *N63°E 23.25' to fd. nail on NW side 22" W.Pine
S12°E 50.51' to set N&T on SW side 16" W. Pine
*N07°W 5.26' to fd. nail on NE side 18" W.Pine
S25°W 1.30' to fd. 3/4" bent pipe
South 3.5' to C/L E-W 2-track
Set Blue Carsonite Post w/ location tag 10' North

* Previous recorded witness.

10-8-09

Surveyor's Michigan License No.: 33981

