

MICHIGAN
DEPARTMENT OF CONSERVATION
FORESTRY DIVISION

LAND CORNER RECORD

T. 43 N.R. 14W

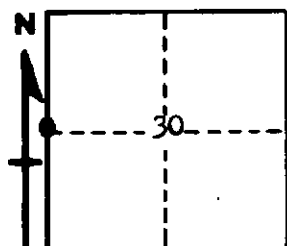
Schoolcraft COUNTY

DESCRIPTION OF CORNER $\frac{1}{4}$ Corner on West side Section 30

CORNER MONUMENT 1" Pipe with 4" Brass Cap.

DATE MONUMENT PLACED AND WITNESSED 5-23-61

WITNESSES TO CORNER..... 8" Jack Pine ($\frac{1}{4}$ S 30 NBT) N74°E 96 $\frac{1}{2}$ links



CIRCLE CORNER REGISTERED

8" Jack Pine ($\frac{1}{4}$ S 30 NBT) S46°E 102 links

AND

DESCRIPTION IN DETAIL AS TO HOW CORNER WAS LOCATED AND IDENTIFIED OR RESTORED.

This corner was established 1.90 chains (record distance) North of $\frac{1}{4}$ Corner on East side Section 25, T43N, R15W.

SURVEYOR'S SEAL

SIGNED

Billy D. Buckler
REGISTERED LAND SURVEYOR
Billy D. Buckler

DATE December 29, 1961