

MICHIGAN
DEPARTMENT OF CONSERVATION
FORESTRY DIVISION

LAND CORNER RECORD

T. 43 N.R. 14W

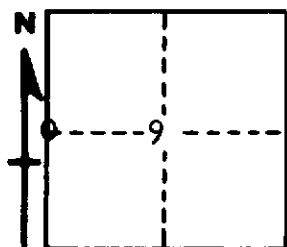
Schoolcraft COUNTY

DESCRIPTION OF CORNER 1/4 Corner between Sections 8-9

CORNER MONUMENT 1" Pipe with 4" Brass Cap.

DATE MONUMENT PLACED AND WITNESSED 6-14-61 with Frank J. Bray

WITNESSES TO CORNER..... 16" W. Pine (1/4 S NBT) N70°E 149 links



8" Red Pine (1/4 S NBT) N23°W 106 links

AND

CIRCLE CORNER REGISTERED

DESCRIPTION IN DETAIL AS TO HOW CORNER WAS LOCATED AND IDENTIFIED OR RESTORED.

This corner was re-established midway and on line between Section Corners.

Note:

Corner lies in wet tag alder marsh.

SURVEYOR'S SEAL

SIGNED

Billy D. Buckler
REGISTERED LAND SURVEYOR
Billy D. Buckler

DATE December 29, 1961