

MICHIGAN  
DEPARTMENT OF CONSERVATION  
FORESTRY DIVISION

# LAND CORNER RECORD

T. 47 N. R. 13-14

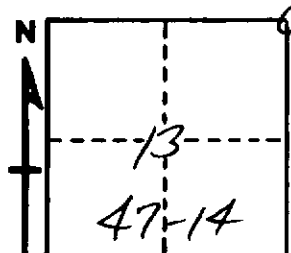
Schoolcraft COUNTY

DESCRIPTION OF CORNER Section Corner common to Sections 7-13-12-13

CORNER MONUMENT 1" Pipe with 4" Aluminum Cap.

DATE MONUMENT PLACED AND WITNESSED 8/16/67

WITNESSES TO CORNER..... 9" Jack Pine (NET) S55°W 38.0'



10" W. Pine (NET) S13°E 15.8'

AND

CIRCLE CORNER REGISTERED

## DESCRIPTION IN DETAIL AS TO HOW CORNER WAS LOCATED AND IDENTIFIED OR RESTORED.

This corner replaced at a wood post set by unknown surveyor. Position checks with corners to East and West.  
No evidence remaining of the original corner.

Found by William Miller, Forestry Aide.

SURVEYOR'S SEAL

SIGNED Billy D. Buckler DATE 10/26/67  
REGISTERED LAND SURVEYOR