

MICHIGAN
DEPARTMENT OF CONSERVATION
FORESTRY DIVISION

LAND CORNER RECORD

T. 47N R. 14W

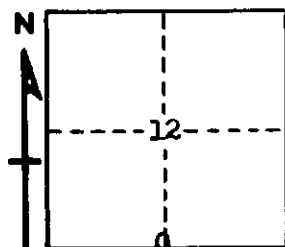
Schoolcraft COUNTY

DESCRIPTION OF CORNER 4 Cor. bet. Secs. 12-13

CORNER MONUMENT 1" pipe with 4" aluminum Cap

DATE MONUMENT PLACED AND WITNESSED 1" pipe with 4" aluminum Cap

WITNESSES TO CORNER..... 16" W. Pine (±S NBT) S87°W 45.5'



16" W. Spruce (±S NBT) N15°E 8.1'

AND

CIRCLE CORNER REGISTERED

DESCRIPTION IN DETAIL AS TO HOW CORNER WAS LOCATED AND IDENTIFIED OR RESTORED.

This corner replaced at an old wood post, set by unknown surveyor. Found remains of a stump bottom, bearing S70°W, 10 links, for a possible witness. Found no other evidence. Distance east to good corner, $\frac{1}{2}$ mile checks well.

SURVEYOR'S SEAL

SIGNED Billy D. Buckler DATE 10-19-70
REGISTERED LAND SURVEYOR