

SURVEY &
REMONUMENTATION

DEC 02 1993

COMMISSION

1993 REMONUMENTATION PROGRAM
LAND CORNER RECORDATION CERTIFICATE
Filing Requirement of Act 74, Mich. P.A. 1970

For corners in

TUSCOLA

(County)

Located In:

VASSAR TOWNSHIP

Corner Code ##

1. Public Land Survey

T 11N R 8E

M-4

T R

T R

T R

T R

2. Property Controlling
in Section

S T R

S T R

3. Miscellaneous

S T R

Property in Sec.

S T R

4. Lot No. , Recorded Plat

5. Private Claims

Register of Deeds Stamp & File Number

I, Kenneth D. Dunton, in a field survey on August 1, 19 93,
do hereby certify that under requirements of P.A. 74, Michigan P.A. of 1970, the corner points mentioned
in lines 1 and 2 above were in conformance with regulations and rules therefore as required in the
current manual of survey instructions of the United States Department of the Interior, Bureau of Land
Management or by a decree of a Court of Law and/or that the corner points mentioned in lines 3, 4 and 5
above were in conformance with the rules of the Michigan Board of Land Surveyors or by a Decree of a
Court of Law, established, re-established, monumented, re-monumented, recovered, found as
expressed below:

**NOTE: Not more than 4 corners, all in the same town and range, may be recorded
on this certificate.**

A. Description of original monument and accessories and/or subsequent restoration:

1821 G.L.O. Notes
Joseph Wampler, D. S.
Set 1/2 m. post
Hemlock 16" S27°W 9.24'
Hemlock 25" N82°E 7.26'

July 5, 1977 Act 74, Vassar Township, 11-8
Page 47 by Kenneth D. Dunton, R.L.S. #23503
Found nothing from large excavation. Set on
line at proportional distance between NE corner
Sec. 1, T11N-R8E, and NE corner Sec. 13, T11N-R8E.
Set 1/2" re-rod & R.L.S. 11192 cap and 2 1/2" pipe.
S45°W 22.17' R.L.S. 11192 tag in 5" ash.
S85°W 25.80' R.L.S. 11192 tag in 10" triple maple.
N85°W 48.18' R.L.S. 11192 tag in 4" ash.
N45°W 71.95' R.L.S. 11192 tag in 8" cottonwood.

Note: Section A. continued on
back of form.

B. Description of corner evidence found and/or method applied in restoring or reestablishing corner:

Found nothing at ^{corner} location, per accessories found. Re-established corner location from
survey Liber 477, Page 864. Measured angle of 82°49'50" between South section line
and township line at corner M-5 and measured Northerly from corner M-5, 2607.50 feet.
Location established matches two remaining witness trees from Act 74, Page 47.

COPY

C. Description of monument for corner and accessories established to perpetuate locating the position of the corner:

Set 4" x 36" concrete monument with 36" x 5/8" rod through center and 2" standard brass
cap. Stamped corner M-4, T11N-R8E. Placed monument box over monument.
S45°21'W 56.11' set T.C. Re-Mon. tag & spike in SE face 12" maple.
N83°17'20"W 33.60' found 1/2" rod & cap #11192 - phone pedestal may have displaced R.O.W. iron
N83°22'W 33.22' telephone pedestal at proper location of R.O.W. corner iron.
N81°11'W 48.50' set T.C. Re-mon. tag & spike in North face 8" ash. Previous measurement
of 48.18' would fit E. face when 4" tree.
N35°14'W 72.76' set T.C. Re-mon. tag & spike in NE face 10" cottonwood.

Signed by

[Signature]

Date

September 27, 1993

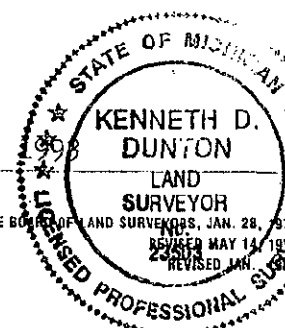
Surveyor's Michigan License No. 23503

APPROVED

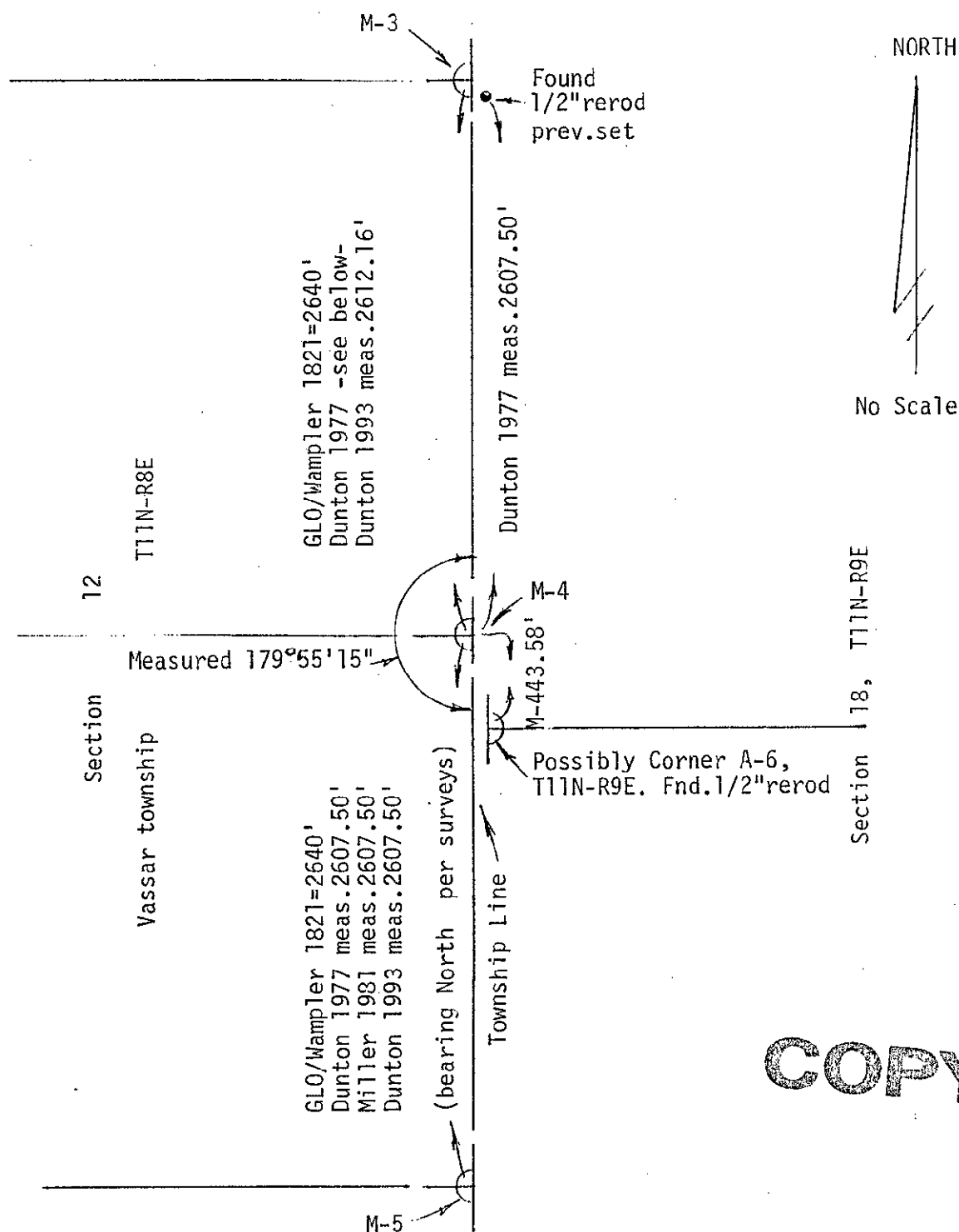
9-27-93

[Signature]

FORM APPROVED BY MICHIGAN STATE BOARD OF LAND SURVEYORS, JAN. 28, 1991



Found 2 1/2" pipe. Accessories same as Act 74, Page 47, Vassar Township.



COPY