

DEC 02 1993

COMMISSION

1993 REMONUMENTATION PROGRAM
 LAND CORNER RECORDATION CERTIFICATE
 Filing Requirement of Act 74, Mich. P.A. 1970
 JUNIATA TOWNSHIP

For corners in

TUSCOLA

(County)

Located In:

Corner Code: #/

- 1. Public Land Survey T12N... R 8E M-10
 T... R...
 T... R...
 T... R...
 T... R...
- 2. Property Controlling S... T... R...
 in Section S... T... R...
 3. Miscellaneous S... T... R...
 Property in Sec. S... T... R...
- 4. Lot No. _____, Recorded Plat _____
- 5. Private Claims _____

RECEIVED FOR RECORD
 LIBER NO. _____ PAGE NO. _____
 FILING NO. #58
 JUNIATA TWP
 93 OCT 22 PM 2:44
 VIRGINIA M. HALL
 TUSCOLA COUNTY
 REGISTER OF DEEDS

Register of Deeds Stamp & File Number

I, Kenneth D. Dunton, in a field survey on June 13, 1993, do hereby certify that under requirements of P.A. 74, Michigan P.A. of 1970, the corner points mentioned in lines 1 and 2 above were in conformance with regulations and rules therefore as required in the current manual of survey instructions of the United States Department of the Interior, Bureau of Land Management or by a decree of a Court of Law and/or that the corner points mentioned in lines 3, 4 and 5 above were in conformance with the rules of the Michigan Board of Land Surveyors or by a Decree of a Court of Law; established, re-established, monumented, re-monumented, recovered, found as expressed below:

NOTE: Not more than 4 corners, all in the same town and range, may be recorded on this certificate.

	A	B	C	D	E	F	G	H	I	J	K	L	M
2	6		5		4		3		2		1		
3													
4	7		8		9		10		11		12		
5													
6	18		17		16		15		14		13		
7													
8	19		20		21		22		23		24		
9													
10	30		29		28		27		26		25		
11													
12	31		32		33		34		35		36		
13													

A. Description of original monument and accessories and/or subsequent restoration:

1821 G.L.O. Notes Joseph Wampler, D.S. Set 1/2 m. post Beech 16" S37°W 21.12' Beech 14" N70°E 2.97'

Aug. 26, 1895 Edward Teskey, County Surveyor measured from M-9 to M-13, 158.60 chains (10467.6') and set cor. M-11 at 5233.8' N. of M-13. Distance of 5233.8' remained between M-9 and M-11. No mention of setting corner M-10.

B. Description of corner evidence found and/or method applied in restoring or reestablishing corner:

Found nothing from 6' x 6' excavation at split of measured mile (5216.86'). Road grade appears to be cut below surrounding grade. Set 1/2" x 18" rod and cap #23503 as temporary corner by single proportion method between M-9 & M-11.

C. Description of monument for corner and accessories established to perpetuate locating the position of the corner:

Removed 1/2" rod at temporary corner and placed standard monument with 2" brass cap stamped corner M-10, T12N-R8E.
 S00°30'00"E 321.42' found pointed stone with punch mark & 1/2" re-rod above punch mark at apparent corner A-12, T12N-R9E.
 N89°56'E 33.00' set 1/2" x 18" rod & cap #23503.
 S89°56'W 33.00' set 1/2" x 18" rod & cap #23503.
 S18°37'W 93.76' set T.C. Re-mon. tag & spike in E. face of Northerly tree of twin 6" maple.
 N53°08'W 40.83' set T.C. Re-mon. tag & spike in NE face 6" pin cherry.
 N90°W 34' remains of corner fence post.

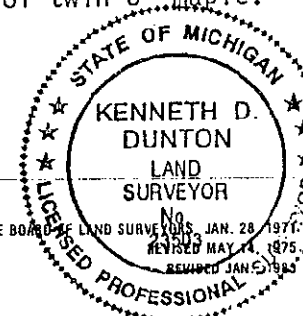
Signed by [Signature]

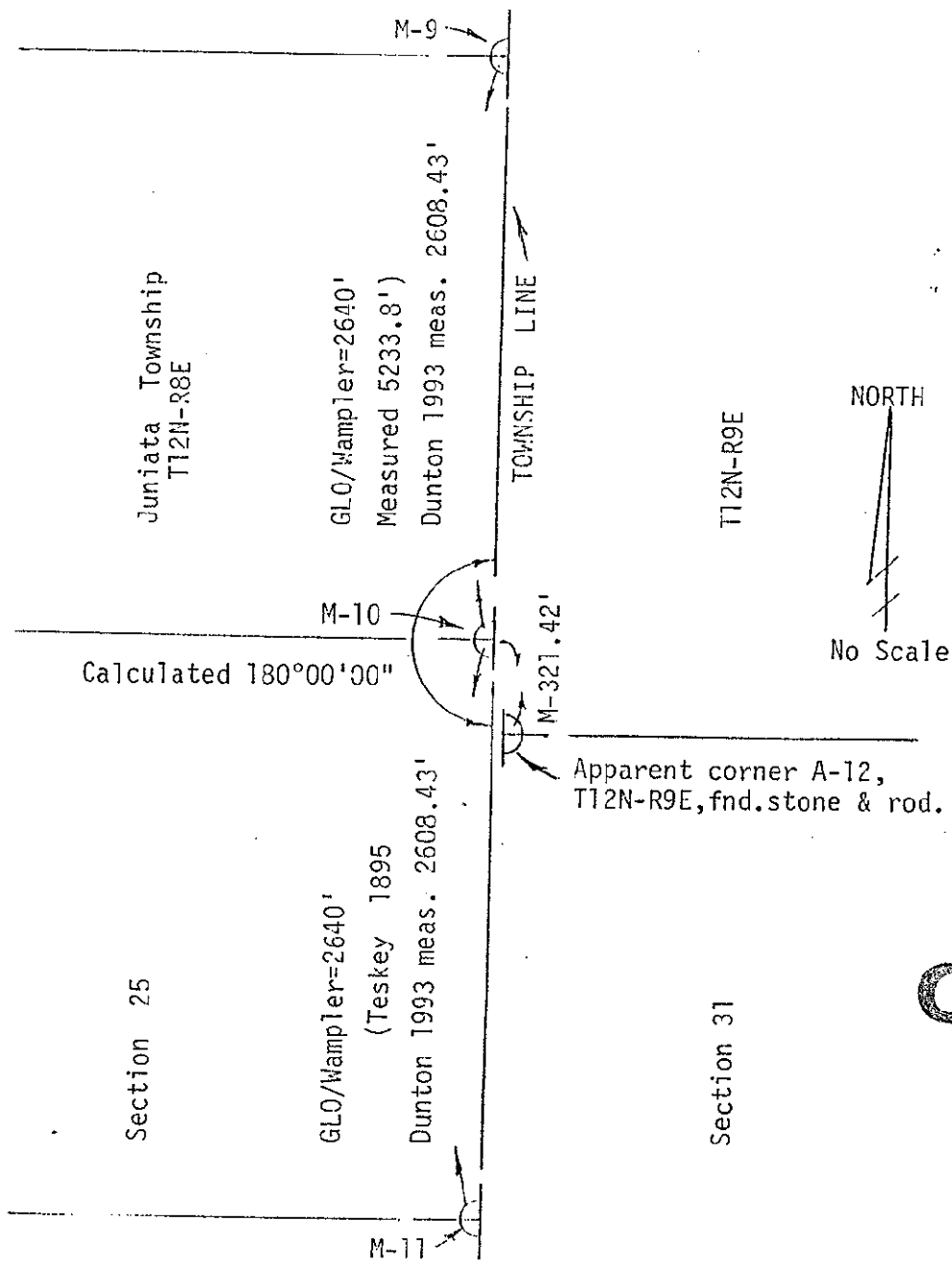
Date Oct. 4, 1993

Surveyor's Michigan License No. 23503

APPROVED
 10-4-93
 [Signature]

COPY





COPY