

LAND CORNER RECORDATION CERTIFICATE

Filing Requirement of Act 74, Mich. P.A. 1970
1995 REMONUMENTATION PROGRAM

For corners in INDIANFIELDS TWP.
TUSCOLA (County)

Located In:

Corner Code #

1. Public Land Survey	T	12N	R	09E	G-1 AMENDED
	T		R		MONUMENT
	T		R		
	T		R		
2. Property Controlling in Section	S	T	R		
	S	T	R		
3. Miscellaneous Property in Sec.	S	T	R		
	S	T	R		

RECEIVED FOR RECORD
LIBER NO. _____ PAGE NO. _____
FILING NO. # 75
95 OCT 30 AM 9:34
INDIANFIELDS TWP.
VIRGINIA H. HELLAREN
TUSCOLA COUNTY
REGISTER OF DEEDS
Register of Deeds Stamp & File Number

4. Lot No. _____ Recorded Plat _____
5. Private Claims _____

I, JONATHAN M. FIELD, in a field survey on SEPTEMBER 1 19 95 do hereby certify that under requirements of P.A. 74, Michigan P.A. of 1970, the corner points mentioned in lines 1 and 2 above were in conformance with regulations and rules therefore as required in the current manual of survey instructions of the United States Department of the Interior, Bureau of Land Management or by a decree of a Court of Law and/or that the corner points mentioned in lines 3, 4 and 5 above were in conformance with the rules of the Michigan Board of Land Surveyors or by a Decree of a Court of Law, established, re-established, monumented, re-monumented, recovered, found as expressed below:

A	B	C	D	E	F	G	H	I	J	K	L	M
1												
2	6	5	4				3		2			1
3												
4	7	8	9				10		11			12
5												
6	18	17	16				15		14			13
7												
8	19	20	21				22		23			24
9												
10	30	29	28				27		26			25
11												
12	31	32	33				34		35			36
13												

NOTE: Not more than 4 corners, all in the same town and range, may be recorded on this certificate.

- A. Description of original monument and accessories and/or subsequent restoration:
- 1835 GLO; RISDON, D.S.; SET POST; BEECH 16 S59E 53LKS., PINE 36' S68W 53LKS.
 - 1955-1963 BLACK, P.S.#3384; UNRECORDED SURVEYS SHOW CORNER; NO OBJECT STATED, NO WITS GIVEN
 - 1971 ROWE ENG.; ROWE, P.S.#11192; SURVEY L.1 PG.268; FND 1" PIPE; N05E 36.69' FE COR, WEST 81.67' SW COR SEC.34 T13N-R9E, S21E 44.12' NW COR SIDEWALK
 - 1972 ROWE ENG.; ROWE, P.S.#11192; SURVEY L.1 PG.337-8; FND 1" PIPE; SAME WITS AS 1971 SURVEY
 - 1974 ROWE, P.S.#11192; LCRC PG.21; FND 1" PIPE; SAME WITS AS 1971 SURVEY ABOVE
 - 1983 ROWE ENG.; BOLDT, P.S.#28405; SURVEY L.540 PG.56-7; FND P-K NAIL; SAME WITS AS 1971 EXCEPT WEST 81.72' TO SE COR SEC.33 T13N-R9E
 - 1988 ROWE ENG.; MATONICH, P.S.#31598; SURVEY L.594 PG.888-9; FND P-K NAIL SAME WITS AS 1983
 - 1991 ROWE ENG.; BROWN, P.S.#33134; SURVEY L.618 PG.295-9; FND P-K NAIL; N40E 40.05' FND NAIL W/TAG #11192 IN T.POLE, N29E 32.24' CENTER OF HYDRANT, N11W 36.67' FACE OF FE COR POST, N65W 106.69' FND NAIL W/BOTTLE CAP IN LIGHT POLE, S50W 133.83' NE COR BRICK BLDG., S26E 56.61' FND NAIL W/TAG #11192 IN P.POLE, S41E 44.03' NW COR CONC. WALK
 - 1992 FIELD, P.S.#37276; LCRC PG.66; FND P-K NAIL; SAME WITS AS 1991 SURVEY ABOVE
 - 1994 ROWE ENG.; FIELD, P.S.#37276; SURVEY L.669 PG.808-809; FND 3/4" PIPE IN MON. BOX; SAME WITS AS 1991 SURVEY ABOVE

- B. Description of corner evidence found and/or method applied in restoring or reestablishing corner:
- 1995 ROWE ENG.; FIELD, P.S.#37276; FND 3/4" PIPE IN MON. BOX AT C/L-C/L GILFORD ROAD AND HOOPER STREET; RECOVERED 2 PREVIOUS WITS INDICATING THAT PIPE IS IN SAME POSITION AS 1971 1" PIPE CITED ABOVE

ACCEPTED FND PIPE AS BEST EVIDENCE OF ORIGINAL CORNER POSITION

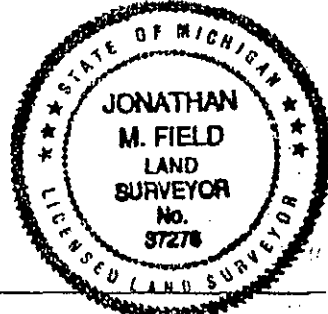
- C. Description of monument for corner and accessories established to perpetuate locating the position of the corner:
- G-1 AMENDED MONUMENT SET 5/8" ROD INSIDE FND PIPE W/ STANDARD REMON CAP IN MON. BOX (ENCASED IN CONCRETE)
 - N40°E, 40.02' FND. NAIL W/TAG #11192 IN S. FACE T.POLE STAMPED CAP "G 1 A.M. T12N-R9E"
 - N29°E, 32.20' TOP CENTER OF HYDRANT
 - N33°E, 42.66' CENTER OF 2" FENCE CORNER POST (NEW FENCE)
 - N65°W, 106.64' FND. NAIL W/ BOTTLE CAP IN S. FACE LIGHT POLE
 - S50°W, 133.81' NE CORNER OF BRICK FACED BLDG.
 - S26°E, 56.68' FND. NAIL W/TAG #11192 IN W. FACE P.POLE
 - S41°E, 44.03' NW CORNER OF OLD CONC. WALK
 - WEST, 81.71' FND. 5/8" ROD IN MON BOX
 - NORTH, 0.56' S. LINE OF T13N-R9E

COPY

Signed by Jonathan M. Field Date 10-27-95

Surveyor's Michigan License No. 37276

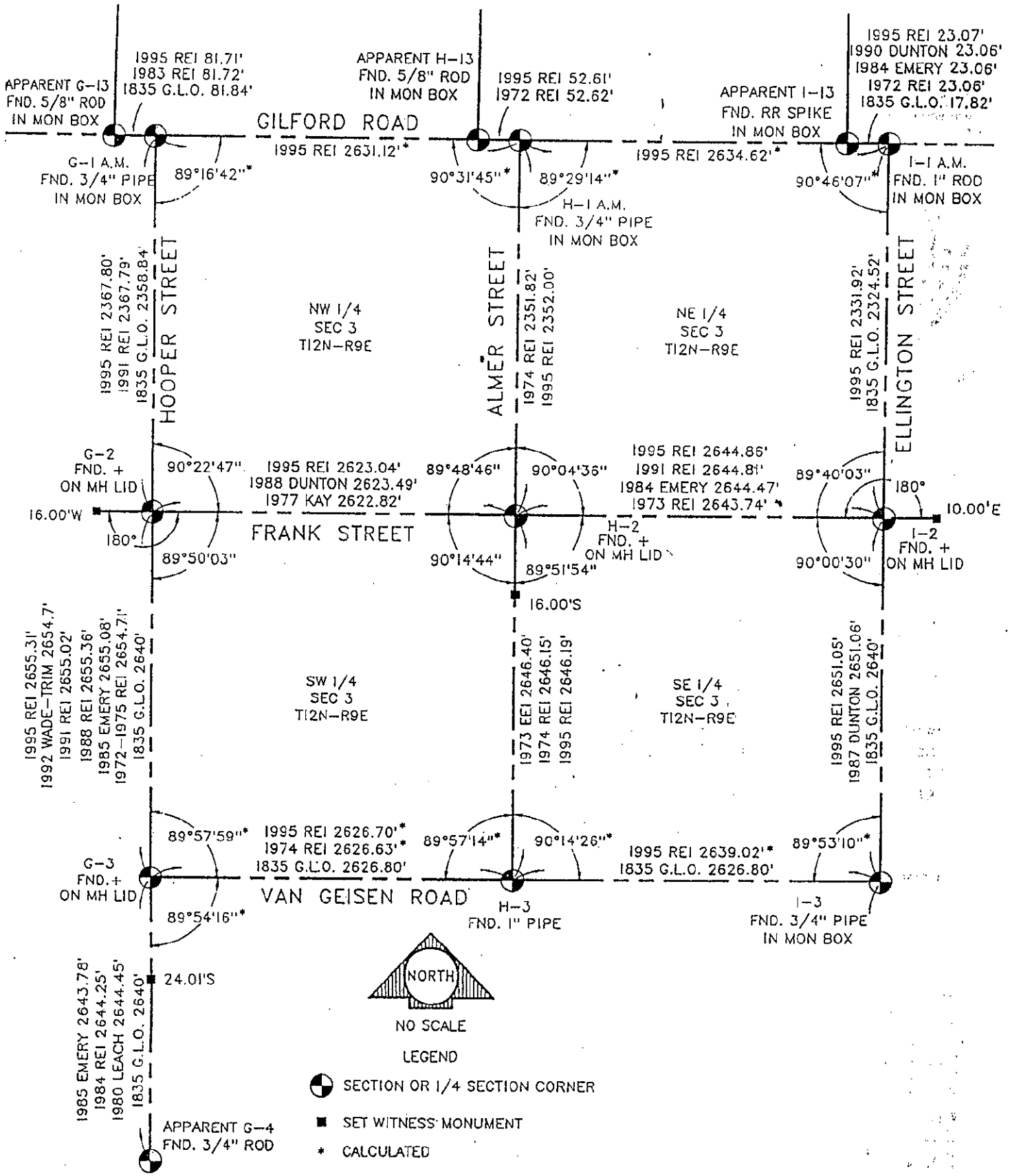
APPROVED
10-16-95
J.P.E.
gry



FORM APPROVED BY MICHIGAN STATE BOARD OF LAND SURVEYORS, JUL 28, 1971
REVISED MAY 14, 1975
REVISED JAN. 1983
ADAPTED FOR WORD PROCESSING MARCH, 1983




DEC 01 1995

COMMISSION



NO SCALE

LEGEND

-  SECTION OR 1/4 SECTION CORNER
-  SET WITNESS MONUMENT
-  CALCULATED