

1993

COMMISSION

1993 REMONUMENTATION PROGRAM
LAND CORNER RECORDATION CERTIFICATE

Filing Requirement of Act 74, Mich. P.A. 1970

N. AKRON TOWNSHIP

For corners in

TUSCOLA

(County)

Located In:

Corner Code ##

1. Public Land Survey

T R

T R

T R

T R

2. Property Controlling
in Section

S1 T15N R8E

S T R

3. Miscellaneous

S T R

Property in Sec.

S T R

0001

Witness to Sag.

Bay meander -

1040' N. of M-3

Register of Deeds Stamp & File Number

4. Lot No. _____, Recorded Plat _____

5. Private Claims _____

I, Kenneth D. Dunton in a field survey on Nov. 7, 19 93

do hereby certify that under requirements of P.A. 74, Michigan P.A. of 1970, the corner points mentioned in lines 1 and 2 above were in conformance with regulations and rules therefore as required in the current manual of survey instructions of the United States Department of the Interior, Bureau of Land Management or by a decree of a Court of Law and/or that the corner points mentioned in lines 3, 4 and 5 above were in conformance with the rules of the Michigan Board of Land Surveyors or by a Decree of a Court of Law; established, re-established, monumented, re-monumented, recovered, found as expressed below:

NOTE: Not more than 4 corners, all in the same town and range, may be recorded on this certificate.

A. Description of original monument and accessories and/or subsequent restoration:

1821 G.L.O. notes by Joseph Wampler, D.S. North on E. By. Sec. 1, T15N-R8E, 16.00 chains set post at margin of Saginaw Bay or Lake Huron. Observation taken at the post at the bay a point of woodland which I take to be at the bay bears N4°E-----, NE end isle bears N23 1/4°W, NW end of isle bears N27°W. A tree which I take to be on the other side of the bay S88 3/4°W. Suspecting this was the lake falling in which an intelligent Indian who spoke very good English I inquired and he told me it was the lake, and bay a little further West.

Note: Section A. continued on back of form.

B. Description of corner evidence found and/or method applied in restoring or reestablishing corner:

Found 3/4" pipe surround by stone pile on Southerly shore of Saginaw Bay. This corner may have been established by Paddison with D.N.R. in 50's or 60's. Information is sketchy and pipe does not fall on township line.

Nov. 7, 1993

Extended township line through corners M-5, 4 & 3, T15N-R8E, N02°48'20"E to Saginaw Bay southerly shore. Set witness monument to meander corner @ 1040.00' N02°48'20"E from corner M-3. By proportion of measure of 5286.98' from corner M-3 to M-5, applied to G.L.O. of 1056' from M-3 to meander, proportionate distance from M-3 to meander will be 1057.38'. Witness mon. is 17.38' Southerly of true position.

COPY

C. Description of monument for corner and accessories established to perpetuate locating the position of the corner:

Set standard concrete monument with 2" brass cap stamped witness to meander, T15N-R8E & T15N-R9E. Placed several large stones around monument.
S79°14'40"W 19.37' found 3/4" pipe surrounded by stones.
S02°48'20"W 15.00' set 3/4" x 30" galvanized iron rod.
S02°21'W 16.13' set 4" x 6" wood post with T.C. Re-mon. tag & spike in E. face.
S44°37'25"E 297.62' set 1/2" x 24" re-rod & cap #23503 @ centerline of Southwesterly end grassy runway @ Sebawaing airport.
S02°48'20"W 1040.00' set standard concrete mon. at corner M-3, T15N-R8E.
N34°29'W 5.72' set T.C. Re-mon. tag & spike in S. face 5" ash.
S64°29'W 148.18' set T.C. Re-mon. tag & spike in SE face 12" lone ash.
North 10'± waters edge of Saginaw Bay.

Signed by

Date Dec. 6, 1993

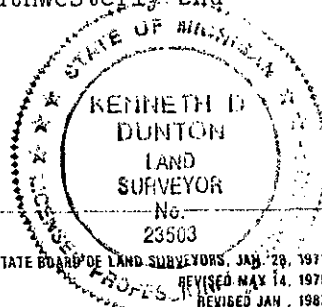
Surveyor's Michigan License No.

23503

APPROVED

12-4-92

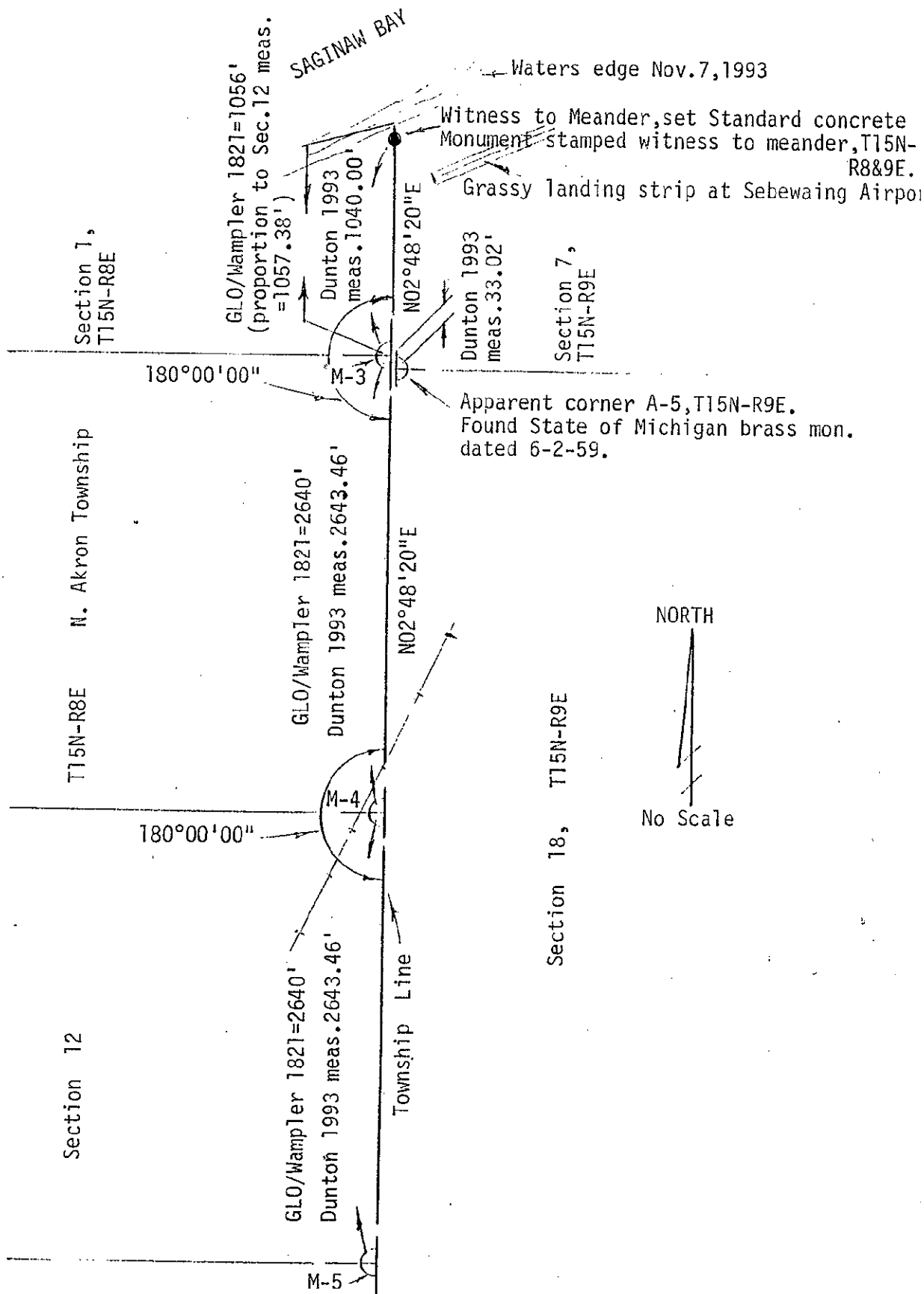
FORM APPROVED BY MICHIGAN STATE BOARD OF LAND SURVEYORS, JAN. 28, 1971
REVISED MAY 14, 1975
REVISED JAN. 1983



RECEIVED FOR RECORD
LIBERATION PAGE NO. 35
FILING NO. N. AKRON
93 DEC 10 PM 12:31
REGISTER OF DEEDS

Section A. continued from front of form:

April 27, 1993 Letter & plan received from D.N.R.
Information on plan sheet is not very legible and sketchy at best. Per letter and plan Y 32 A, re-survey of the meander line along Saginaw Bay in Huron County was conducted by department surveyor, Lee Paddison. The plan does not indicate how the meander corner between T15N-R8 & 9E was established and apparently the original field notes are missing. Per plan a 3/4" x 30" I.P. (iron pipe) was placed at the meander corner. Date on plan is not legible (could be 1960?).



COPY