

LAND CORNER RECORDATION CERTIFICATE
Filing Requirement of Act 74, Mich. P.A. 1970

For corners in

Wayne

(County)

Located In:

Corner Code #

1. Public Land Survey

T 25 R 11EPRIVATE CLAIM
(#001)

T _____ R _____

T _____ R _____

T _____ R _____

2. Property Controlling
in Section

S _____ T _____ R _____

S _____ T _____ R _____

3. Miscellaneous

S _____ T _____ R _____

Property in Sec.

S _____ T _____ R _____

Compliance with
ACT 345, P.A. 1990APPROVED ON: 12-8-93
WAYNE COUNTY REMONUMENTATION
PEER GROUP COMMITTEE

Register of Deeds Stamp & File Number

4. Lot No. _____

Recorded Plat

5. Private Claims _____

Rear Line of P.C. 228

I, George M. Platz, in a field survey on November 15, 1993, do hereby certify that under requirements of P.A. 74, Michigan P.A. of 1970, the corner points mentioned in lines 1 and 2 above were in conformance with regulations and rules therefore as required in the current manual of survey instructions of the United States Department of the Interior, Bureau of Land Management or by a decree of a Court of Law and/or that the corner points mentioned in lines 3, 4 and 5 above were in conformance with the rules of the Michigan Board of Land Surveyors or by a Decree of a Court of Law; established, re-established, monumented, re-monumented, recovered, found as expressed below:

NOTE: Not more than 4 corners, all in the same town and range, may be recorded on this certificate.

A. Description of original monument and accessories and/or subsequent restoration:

THE REAR LINE OF P.C. 228

THE REAR LINE OF P.C. 228 WAS SURVEYED AS A STRAIGHT LINE IN 1810 BY AARON GREELEY (SEE RESEARCH DOSSIER FOR SKETCH AND NOTES). THIS LINE IS ADJACENT TO FRACTIONAL SECTION 1, T.2S., R.11E. POSTS WERE ORIGINALLY SET AT THE CORNERS ONLY AND NO LINE STAKES ARE CALLED OUT. FIVE SUBDIVISIONS HAVE BEEN PLATTED ADJACENT TO THIS LINE, DELINEATING IT WITH DIMENSION AND BEARING. THESE SUBDIVISIONS CREATED/SHOW A DEFLECTION IN THIS LINE. THE CITY OF DETROIT SURVEY BUREAU HAS ASSEMBLED AND MAINTAINED THEIR "CARTOGRAPHICAL MAPS" FROM RECORD PLAT DATA AND FIELD WORK. THESE MAPS HAVE BEEN RELIED UPON FOR A GREAT NUMBER OF YEARS AND ARE CONSIDERED THE BEST ASSEMBLED COLLECTION OF WRITTEN EVIDENCE AVAILABLE. TO THE BEST OF MY KNOWLEDGE, THERE HAS NEVER BEEN ANY SUBSEQUENT RESTORATION OF THIS LINE, EXCEPTING THE PLATS WHICH WERE DONE LONG AGO.

B. Description of corner evidence found and/or method applied in restoring or reestablishing corner:

THE REAR LINE OF P.C. 228

A COMPLETE ANALYSIS OF THIS LINE FROM ITS EASTERN END AT THE LINE COMMON TO PRIVATE CLAIMS 228 AND 227 TO ITS WESTERN END AT THE LINE COMMON TO P.C. 228 AND P.C. 726 HAS BEEN FIELD MEASURED BY SPALDING, DEDECKER, LOCATING STREET LINES, ALLEY LINES, FENCE LINES, TREES, AND OTHER OCCUPATION. BASED UPON THE FACTS OBTAINED AT THESE VARIOUS POSITIONS (SEE RESEARCH DOSSIER), IT IS MY CONCLUSION THAT A DEFLECTION DOES TAKE PLACE AT THE CENTERLINE OF THE ALLEY BETWEEN "CANDLERS SUBDIVISION" AND "J.MCMILLAN'S ENDENSOR SUBDIVISION". THE SPECIFIC POINTS HELD AS GOOD AND THEIR RELATIONSHIPS WITH THE OTHER VARIOUS POINTS FIELD MEASURED/COMPUTED ARE LABELED IN THE RESEARCH DOSSIER.

C. Description of monument for corner and accessories established to perpetuate locating the position of the corner:

REAR LINE OF P.C. 228 - SEE SKETCH ON BACK OF THIS SHEET.

(B) SET MONUMENT WITH WAYNE COUNTY REMONUMENTATION TAG AND LICENSE CAP NO. 38121 IN MONUMENT BOX IN PAVEMENT AT DEFLECTION POINT IN ALLEY. THE LOCATION OF THIS PROPERTY CONTROLLING MONUMENT IS ACCEPTED AS A CAREFUL AND FAITHFUL DETERMINATION OF THIS PRIVATE CLAIM LINE BASED UPON ALL KNOWN EVIDENCE.

AZ. 72° 10.81'; SET PK NAIL WITH WCR TAG IN CONCRETE BASE OF FENCE POST
 AZ. 182° 32.37'; SET PK NAIL WITH WCR TAG IN EAST FACE UTILITY POLE WITH LIGHT
 AZ. 295° 50.95'; SET PK NAIL WITH WCR TAG IN NORTHEAST FACE 14" TREE
 AZ. 352° 29.51'; SET PK NAIL WITH WCR TAG IN CONCRETE BASE OF FENCE POST

SURVEY &
 REMONUMENTATION

JAN 26 1999

Signed by

George M. Platz

SECTION

Date

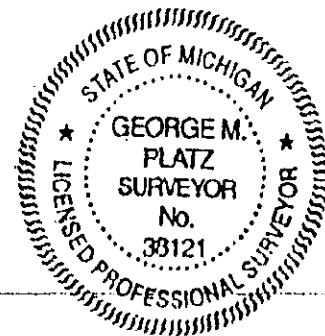
12-3-93

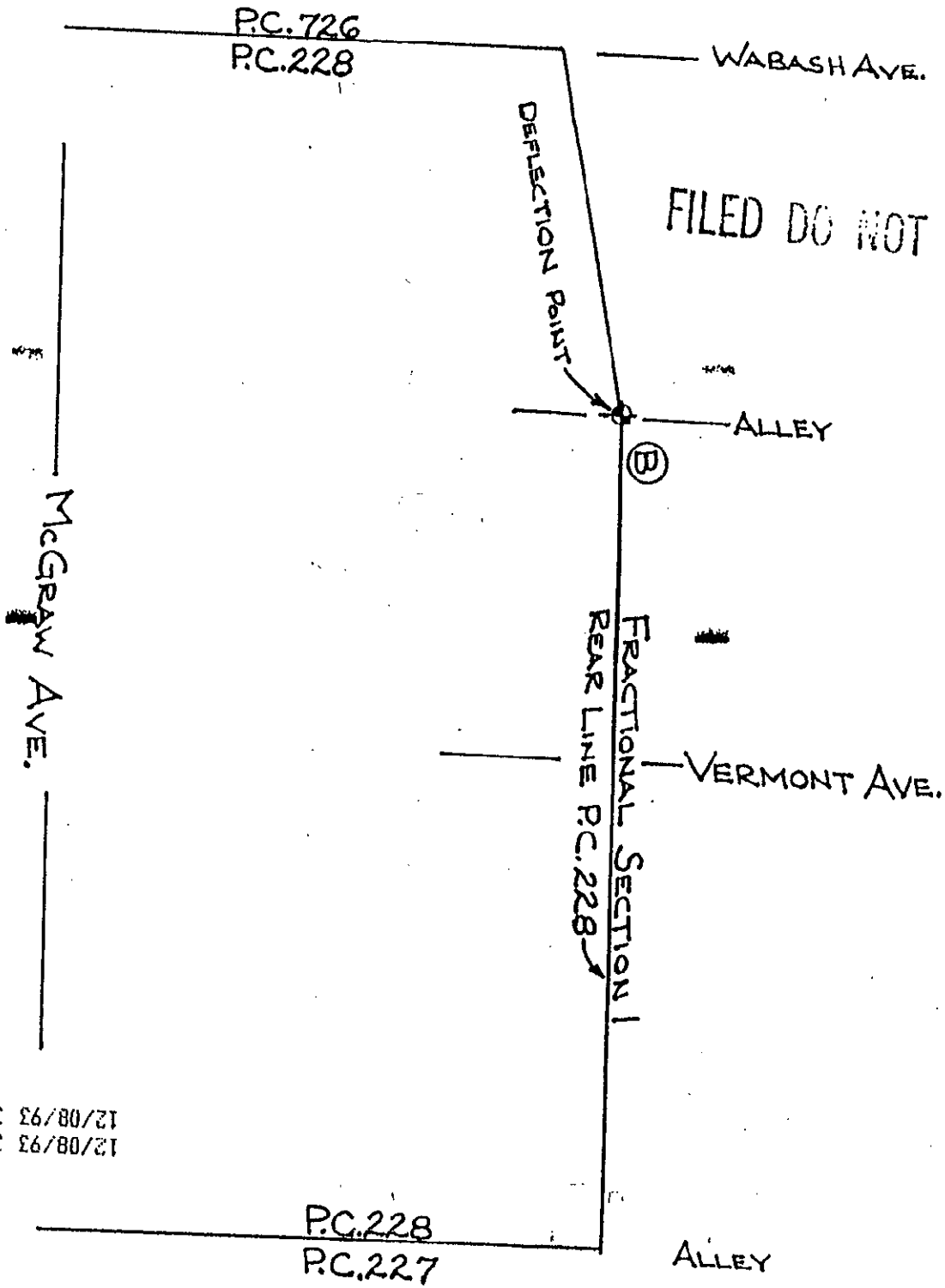
Surveyor's Michigan License No.

38121

	A	B	C	D	E	F	G	H	I	J	K	L	M
2	6		5		4		3		2		1		
3													
4	7		8		9		10		11		12		
5													
6	18		17		16		15		14		13		
7													
8	19		20		21		22		23		24		
9													
10	30		29		28		27		26		25		
11													
12	31		32		33		34		35		36		
13													

93 DEC -8 PM 1:12
 REGISTERED
 WAYNE COUNTY, MI





FILED DO NOT MAIL

12/08/93 35181 REMO FEE 2.00
12/08/93 35181 DEED 14.00

SURVEY &
REMONUMENTATION

JAN 26 1999

SECTION

12th STREET
(ROSA PARKS BLVD.)

