

DEC 01 2000

SECTION

LAND CORNER RECORDATION CERTIFICATE
Filing Requirement of Act 74, Mich. P.A. 1970

\$ 10.00 DEED

\$ 4.00 REMONUMENTATION

15 DEC 95 10:26 A.M.

RECEI

RECORDED

WEST E. YOUNGBLOOD, REGISTER
WAYNE COUNTY, MI

END

For corners in

WAYNE
(County)

Located In:
City of Detroit

Corner Code #

1. Public Land Survey

T 2S R 11E

Protracted
Location

2. Property Controlling
in Section

S T R

005

3. Miscellaneous
Property in Sec.

S T R

4. Lot No. , Recorded Plat

5. Private Claims Line Common to P.C. 27 and P.C. 227

I-94 R.O.W., East of 12th St.

I, George M. Platz, in a field survey on December 8, 19 95, do hereby certify that under requirements of P.A. 74, Michigan P.A. of 1970, the corner points mentioned in lines 1 and 2 above were in conformance with regulations and rules therefore as required in the current manual of survey instructions of the United States Department of the Interior, Bureau of Land Management or by a decree of a Court of Law and /or that the corner points mentioned in lines 3, 4 and 5 above were in conformance with the rules of the Michigan Board of Land Surveyors or by a Decree of a Court of Law; established, re-established, monumented, re-monumented, recovered, found as expressed below:

NOTE: Not more than 4 corners, all in the same town and range, may be recorded on this certificate.

A. Description of original monument and accessories and/or subsequent restoration:
Line Common to P.C. 27 and P.C. 227

The eastern line of P.C. 227 was originally surveyed as one tract of land in 1810. The western line of P.C. 27 was originally surveyed as two separate tracts of land, the first in the year 1810 and the second most likely in 1829 (see research dossier for sketch and notes). Posts were originally set at the corners only and no line stakes are called out. Many subdivisions have been platted adjacent to this line. The City of Detroit Survey Section has assembled and maintained their "Cartographic Maps" from record plat data and field work. These maps have been relied upon for a great number of years and are considered the best assembled collection of written evidence available. To the best of my knowledge, there has never been any subsequent restoration of this line, excepting the plats which were done long ago.

B. Description of corner evidence found and/or method applied in restoring or reestablishing corner:
Line Common to P.C. 27 and P.C. 227

A complete analysis of this line from its southern beginnings at the Detroit River to its northern terminus has been field measured by Spalding DeDecker & Associates, locating building lines, street lines, and alley lines at various positions (see research dossier). It is my conclusion that three line orientation changes occur on this line. At this time, I do not have a final answer for the ENTIRE line. The orientation of the middle portion of this line, between Michigan Ave. and Grand River, will be determined under a future remonumentation program contract. The northern portion and southern portion of this line has been determined and the specific points held as good with their relationship to other various points field measured are labeled in the research dossier.

C. Description of monument for corner and accessories established to perpetuate locating the position of the corner:
Line Common to P.C. 27 and P.C. 227 -- See sketch on the back of this sheet.

(C) Set 4"x 36" Concrete Monument w/Aluminum Disk stamped "WAYNE COUNTY REMONUMENTATION, SPALDING-DEDECKER, PS 38121" in a Monument Box Located 25' North of the East Bound Ford Freeway (I-94) Service Drive, approximately 190' +/- East of the centerline of Rosa Parks (12th Street). The location of this property controlling monument is accepted as a careful and faithful determination of this private claim line based upon all known evidence.
Az. 77° 56.84'; Set P.K. Nail w/WCR Tag in Concrete Base to Traffic Signal Box
Az. 140° 58.69'; Set P.K. Nail w/WCR Tag in NE Corner of a Concrete Base for a Light Pole
Az. 244° 248.74'; Set P.K. Nail w/WCR Tag in NE Corner of a Concrete Base for a Light Pole
Az. 338° 17.88'; Set P.K. Nail w/WCR Tag in SW Corner of a Concrete, Railroad Bridge Wall

Signed by George M. Platz

Date 12-11-95

Surveyor's Michigan License No. 38121

LIBER 28465 PAGE 756

Compliance with
ACT 345, P.A. 1990

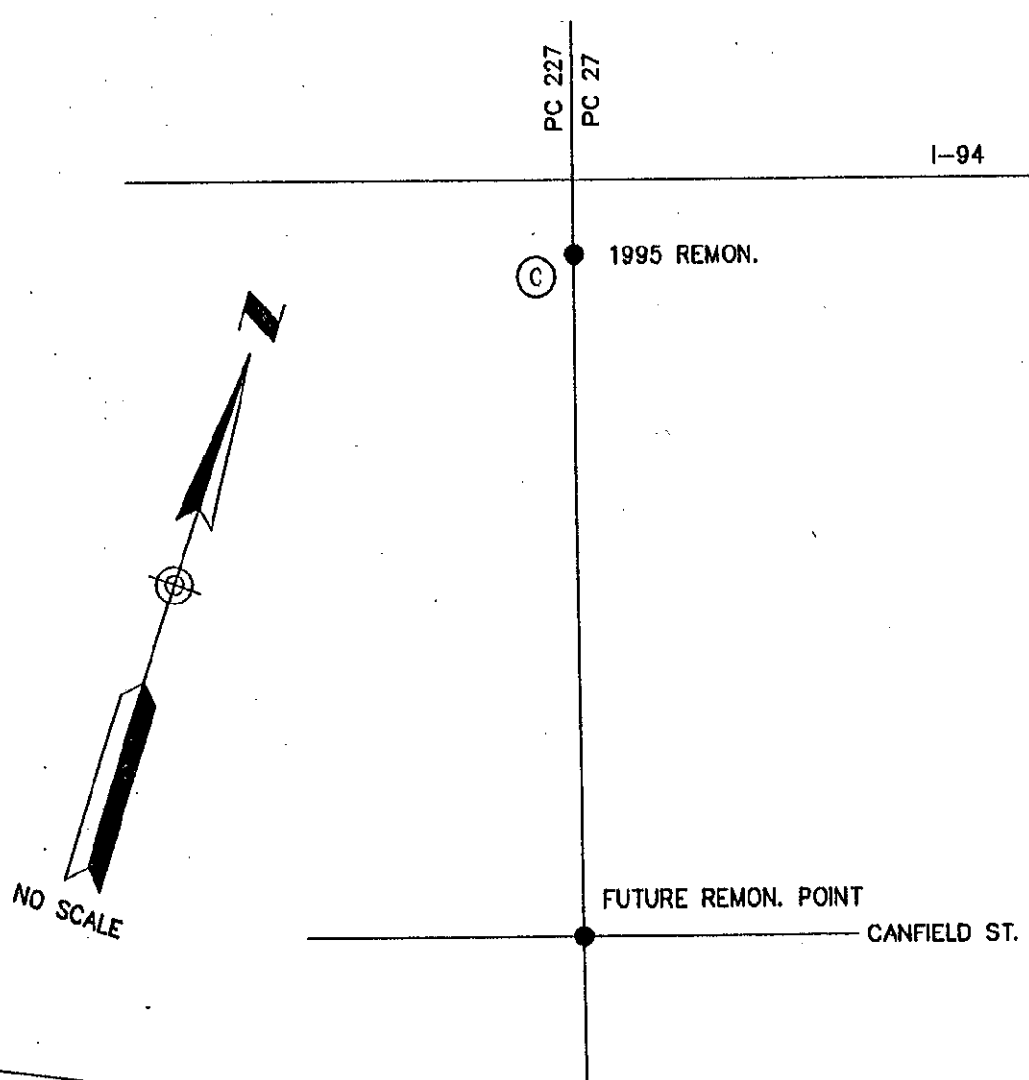
APPROVED ON: 12-11-95
WAYNE COUNTY REMONUMENTATION
PEER GROUP COMMITTEE

Register of Deeds Stamp & File Number

	A	B	C	D	E	F	G	H	I	J	K	L	M
2	6	5	4	3	2	1							
3													
4	7	8	9	10	11	12							
5													
6	18	17	16	15	14	13							
7													
8	19	20	21	22	23	24							
9													
10	30	29	28	27	26	25							
11													
12	31	32	33	34	35	36							
13													

City of Detroit

FILED DO NOT MAIL



SURVEY &
REMONUMENTATION
DEC 01 2000
SECTION

P.C. LINE NOT
DETERMINED
BETWEEN MICHIGAN
& GRAND RIVER
AT THIS TIME

GRAND RIVER AVE.

MICHIGAN AVE.

