

FILE DO NOT MAIL

LAND CORNER RECORDATION CERTIFICATE
Filing Requirement of Act 74, Mich. P.A. 1970

For corners in

Wayne (County) Located In: Gross Ile Twp. Corner Code #

1. Public Land Survey T R
T R
T R
T R

2. Property Controlling S T R
in Section S T R

3. Miscellaneous S PC T 45 R 11 E
Property in Sec. S T R

Liber-30864 Page-23
99595874 12/30/1999
F.E. Youngblood, Wayne Co. Register of Deeds
RDANDSYL

Compliance with
ACT 345, P.A. 1990

APPROVED ON: 12-8-99
WAYNE COUNTY REMONUMENTATION
PEER GROUP COMMITTEE

Register of Deeds Stamp & File
Number

4. Lot No. , Recorded Plat

5. Private Claims 553/554 int. of Groth and River Roads in Gross Ile Twp.

I, Michael S. Hoben, in a field survey on Sept. 22, 1999 do hereby state that under requirements of P.A. 74, Michigan P.A. of 1970, the corner points mentioned in lines 1 and 2 above were in conformance with regulations and rules therefore as required in the current manual of survey instructions of the United States Department of the Interior, Bureau of Land Management or by a decree of a Court of Law and for that the corner points mentioned in lines 3, 4 and 5 above were in conformance with the rules of the Michigan Board of Land Surveyors or by a Decree of a Court of Law; established, re-established, monumented, recovered, found as expressed below:

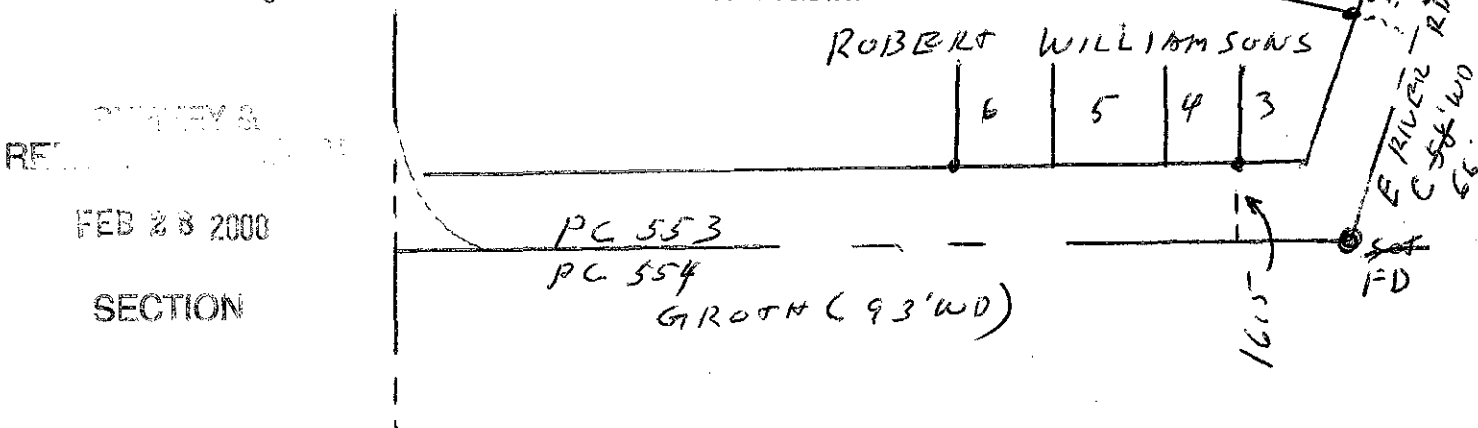
NOTE: Not more than 2 corners, all in the same town and range, may be recorded on this certificate.

A. Description of original monument and accessories and/or subsequent restoration:

1810 PC survey Greely
1916 Lake Erie View Howard
1920 Supervisor's plat no. 20 H Kemta
1925 Robert Williamsons Gross Ile Sub Wehmeyer

B. Description of corner evidence found and/or method applied in restoring or reestablishing corner:

By intersecting the subdivisions mentioned above we established the location of this corner and the location Falls on an existing Iron in a mon. box as shown on sketch below..



B. Description of monument for corner and accessories established to perpetuate locating the position of the corner:

I set a 2" aluminum cap stamped "Wayne County Monument MI Act 345 #35994" on the existing rebar in an existing monument box.

N45W 32.08' WCRC tag on a S side of pp
N45E 67.53' WCRC tag on W side of guy pole
S45E 33.84' WCRC tag on SW side of 16" tree
S45W 98.30' top of bolt on hyd.

The selected location for this Property Controlling Monument is accepted as a careful and faithful determination of the position as indicated.

Signed by Michael S. Hoben

Date Dec 27, 1999

Surveyor's Michigan License No. 35994

FORM APPROVED BY MICHIGAN STATE BOARD OF LAND SURVEYORS, JAN. 28, 1971

REVISED MAY 14, 1975
REVISED JAN., 1983
REVISED OCT., 1999

R LCR 9 4R 1/2 A DPZ