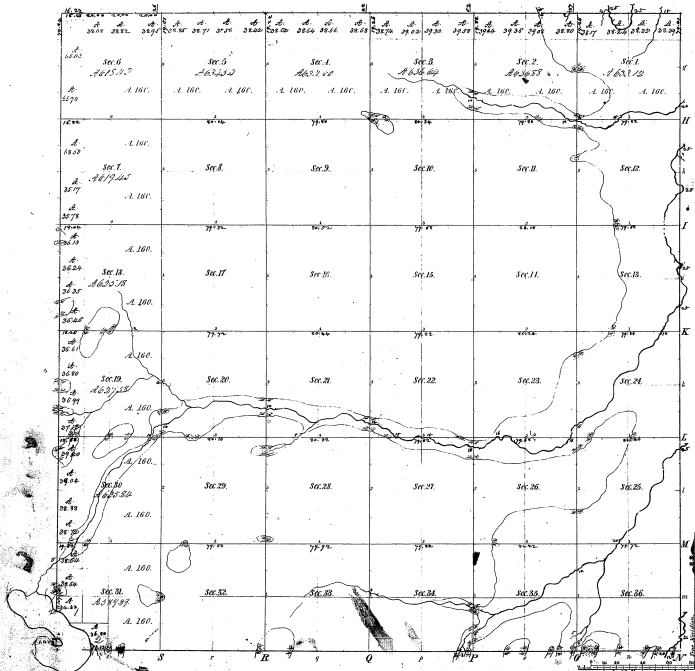


Township 1^o 28ⁿ Range 1^o 5^e Mer. Mich.

Fall 1880

Mich



Boundaries of part of S. M. in Sec. 31

from Townships 10th 11th 12th 13th 14th 15th 16th 17th 18th 19th 20th 21th 22th 23th 24th 25th 26th 27th 28th 29th 30th 31th 32th 33th 34th 35th 36th

2	10622	6.84
3	10645	6.84
4	10668	6.84
5	10691	6.84
6	10714	6.84
7	10737	6.84
8	10760	6.84
9	10783	6.84
10	10806	6.84
11	10829	6.84
12	10852	6.84
13	10875	6.84
14	10898	6.84
15	10921	6.84
16	10944	6.84
17	10967	6.84
18	10990	6.84
19	11013	6.84
20	11036	6.84
21	11059	6.84
22	11082	6.84
23	11105	6.84
24	11128	6.84
25	11151	6.84
26	11174	6.84
27	11197	6.84
28	11220	6.84
29	11243	6.84
30	11266	6.84
31	11289	6.84
32	11312	6.84
33	11335	6.84
34	11358	6.84
35	11381	6.84
36	11404	6.84

22-9

22-9

Total number of Acres 2082 1/2

Survey designated	By whom Surveyed	Date of Contract	Amount of Survey	When Surveyed	Range for use of in the Survey
Bartholomew	Geo. C. Co.	Nov. 19, 1830	63 7/8	1830	5 th of 1830
Bartholomew	Geo. C. Co.	Nov. 25, 1830	60.41	1830	5 th of 1830

The above copy of Township 1^o 28ⁿ of Range 1^o 5^e East of the Principal Meridian, Michigan, is truly conformable to the field notes of the survey and for the purposes hereinafter mentioned and approved.

George S. Smith, Clerk
 Commission 10th 1^o 1840

W. S. Searns
 Surveyor