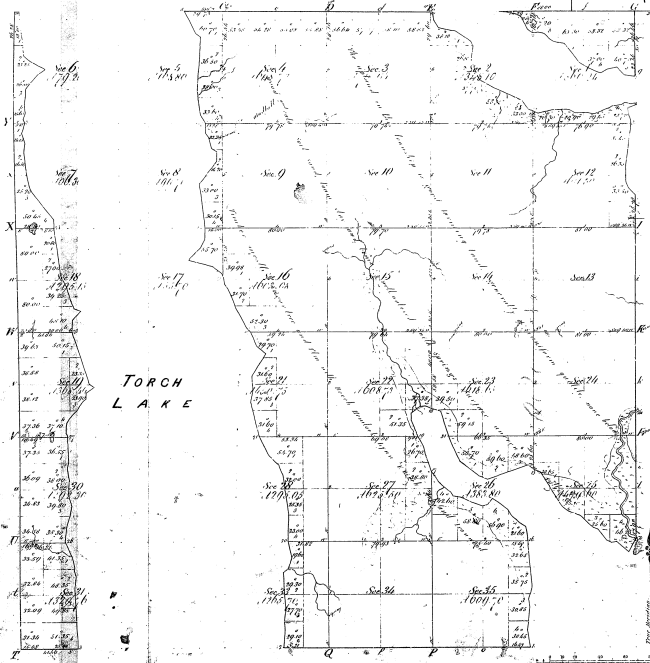


Resurvey  
Township N<sup>o</sup> 30N. Range N<sup>o</sup> 8E. Mer. Mich.



Boundaries of  
Township N. 30N. Range N. 8E. Mer. Mich.

15-1

TORCH  
LAKE

Total number of Acres 4506.65

Survey	No. Acres Surveyed	Date of Contract	Amount of Survey	When Surveyed	When Placed in the hands of the Surveyor
Township	4506.65	April 14, 1855	75. 00. 00	1855	1855
Donation	118. 00. 00	1855	05. 00. 00	1855	1855

The above Map of Township N. 30 North of Range N. 8 East of the Meridian of Michigan is a true and correct copy of the survey thereof on file in this Office which have been examined and approved.

Charles H. ...  
1855