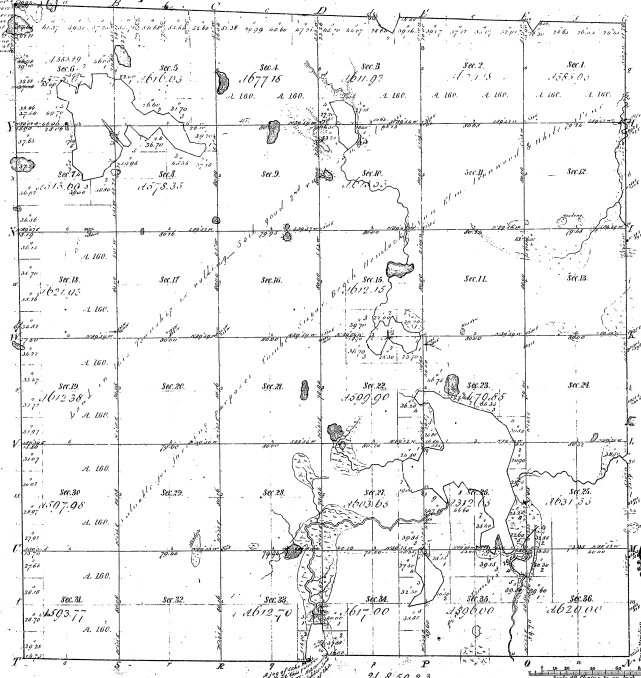


Re-Survey of
 Township N. 27 N. Range N. 13 W. Mer. Mich.

The blue figures and marks show the position of the old corners and lines.



Total Number of Acres 21,850.23

| Survey Designated | By Whom Surveyed | Date of Conduct | Amount of Survey | When Surveyed |
|-------------------|------------------|-----------------|------------------|---------------|
| Original | John A. ... | July 22, 1857 | 4,487.15 | 1857 |
| Subdivisions | Lucas & ... | April 1862 | 73.52 | 1862 |

The above Report Forming 1927 Acre of Range N. 27 N. Mer. Mich. is hereby confirmed to the full value of the survey being made to the satisfaction of the law and is approved.

Surveyed and Corrected
 [Signature]

Measurements of
 Posts corners 1857 Posts corners 1862 Posts corners 1864

Note: The blue figures and marks show the position of the old corners and lines.

Number 120, 646, 576

17-9