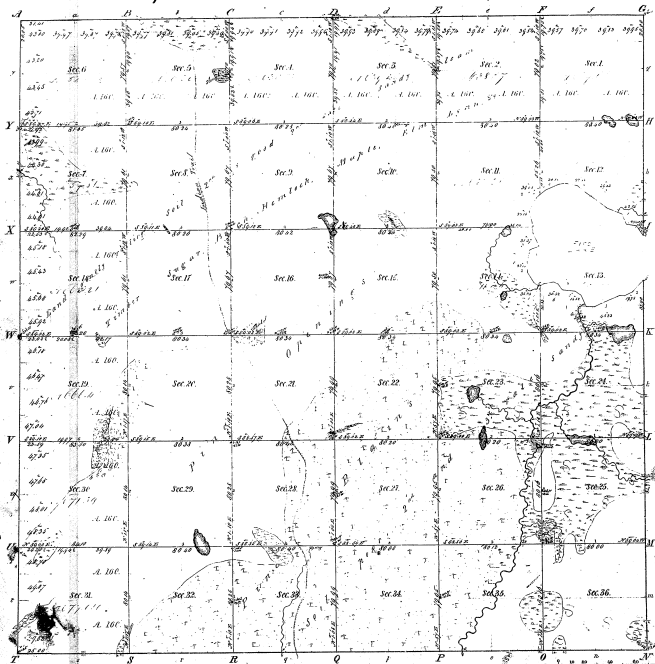


Re-survey
Township 1st 25th N Range 1st 9th W Mer. Mich.



Meriters of
Public Lands 1878 Public Lands 1878 Public Lands 1878

Meriters of Public Lands 1878

2-10

Total number of Acres 22,539.56

Source designated	By Whom Surveyed	Date of Original	Amount of Survey	When Surveyed	Amount of land in the Survey 40 rods
2-10 Township 1 st 25 th N Range 1 st 9 th W	J. H. B. Smith	Aug 21 st 1858	22,539.56	Aug 21 st 1858	22,539.56
2-10	Allen Thayer	Aug 25 th 1858	6,000.00	Aug 25 th 1858	6,000.00

The above map of Township 1st 25th N Range 1st 9th W Mer. Mich. is a true and correct copy of the original survey made by the field notes of the survey kept on file in this Office which have been examined and approved.

Surveyor General Office
St. Louis, Mo. Jan 11th 1888

S. C. Chapman
Surveyor

PLAT of two Islands

in Fife Lake, in Secs 13 and 14, Tp. 25 N., R. 9 W., Michigan Mer.

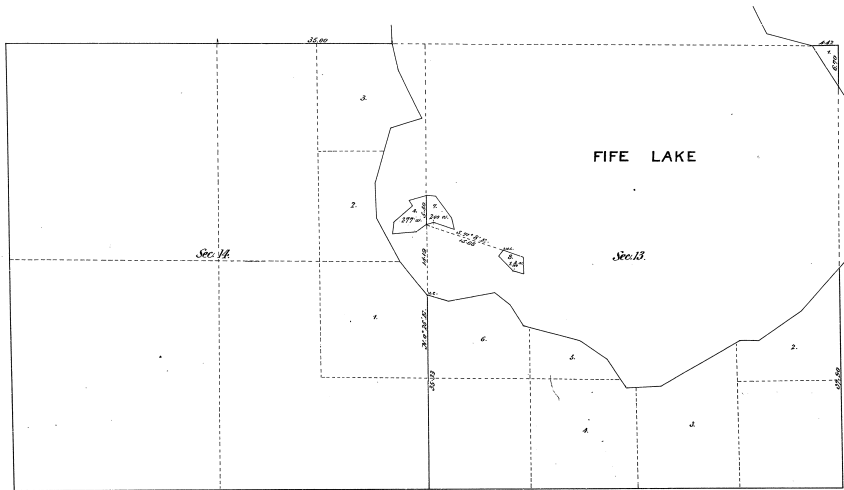
MICHIGAN.

Surveyed by Delmar E. Reed, U.S. Dep. Surveyor, April 15-16, 1903,
under special instructions from the Com' General dated Dec. 17, 1902.

Scale 10 chs = 1 inch.

16-21

(2) 16-21



Department of the Interior,
General Land Office,
Washington, D.C. Oct. 17th 1903.

The above plat of two Islands, in Fife Lake, in Secs 13 and 14, Tp. 25 N., R. 9 W., Michigan Meridian, Michigan, is a correct plat of a survey executed by Delmar E. Reed, U.S. Deputy Surveyor, in pursuance of special instructions from the Commissioner of the General Land Office, bearing date Nov. 17, 1902, and is strictly conformable to the field notes thereof on file in this office, which have been examined and approved.

W. A. Richards
Commissioner ex officio
Surveyor General for Michigan