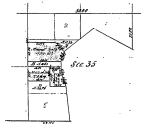


Township N^o 30 N. Range N^o 10 West Mer. (Mich.)

16-3

Section 23 Representing Township lands
in this Township as granted by State of Michigan, 1837, in
conjunction with public lands remaining in unaltered form

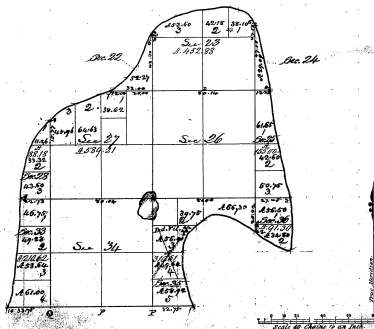
Grand Traverse Bay.



Sec. 23 and 24 represent public land remaining in that state and
unaffected by the public land remaining in that state and
lands granted from 1812-1837 represent Township lands

I certify that the above diagram correctly represents
public lands remaining in that state in sections
23 & 24 of this township in accordance with the public
lands remaining in that state.
The subdivisions of lot 8 & 11 as is above exhibited,
having been examined and found correct, the
same is hereby approved.
Surveyor General's Office,
St Paul, June 19, 1857

L. L. Goodrich
Surveyor General



Township	Range	Section	Area		Per Cent	
			Acres	Sq. Rods	Acres	Sq. Rods
30 N.	10 W.	1	360.00	5760.00	3.60	57.60
30 N.	10 W.	2	360.00	5760.00	3.60	57.60
30 N.	10 W.	3	360.00	5760.00	3.60	57.60
30 N.	10 W.	4	360.00	5760.00	3.60	57.60
30 N.	10 W.	5	360.00	5760.00	3.60	57.60
30 N.	10 W.	6	360.00	5760.00	3.60	57.60
30 N.	10 W.	7	360.00	5760.00	3.60	57.60
30 N.	10 W.	8	360.00	5760.00	3.60	57.60
30 N.	10 W.	9	360.00	5760.00	3.60	57.60
30 N.	10 W.	10	360.00	5760.00	3.60	57.60
30 N.	10 W.	11	360.00	5760.00	3.60	57.60
30 N.	10 W.	12	360.00	5760.00	3.60	57.60
30 N.	10 W.	13	360.00	5760.00	3.60	57.60
30 N.	10 W.	14	360.00	5760.00	3.60	57.60
30 N.	10 W.	15	360.00	5760.00	3.60	57.60
30 N.	10 W.	16	360.00	5760.00	3.60	57.60
30 N.	10 W.	17	360.00	5760.00	3.60	57.60
30 N.	10 W.	18	360.00	5760.00	3.60	57.60
30 N.	10 W.	19	360.00	5760.00	3.60	57.60
30 N.	10 W.	20	360.00	5760.00	3.60	57.60
30 N.	10 W.	21	360.00	5760.00	3.60	57.60
30 N.	10 W.	22	360.00	5760.00	3.60	57.60
30 N.	10 W.	23	360.00	5760.00	3.60	57.60
30 N.	10 W.	24	360.00	5760.00	3.60	57.60
30 N.	10 W.	25	360.00	5760.00	3.60	57.60
30 N.	10 W.	26	360.00	5760.00	3.60	57.60
30 N.	10 W.	27	360.00	5760.00	3.60	57.60
30 N.	10 W.	28	360.00	5760.00	3.60	57.60
30 N.	10 W.	29	360.00	5760.00	3.60	57.60
30 N.	10 W.	30	360.00	5760.00	3.60	57.60
30 N.	10 W.	31	360.00	5760.00	3.60	57.60
30 N.	10 W.	32	360.00	5760.00	3.60	57.60
30 N.	10 W.	33	360.00	5760.00	3.60	57.60
30 N.	10 W.	34	360.00	5760.00	3.60	57.60
30 N.	10 W.	35	360.00	5760.00	3.60	57.60
30 N.	10 W.	36	360.00	5760.00	3.60	57.60
30 N.	10 W.	37	360.00	5760.00	3.60	57.60
30 N.	10 W.	38	360.00	5760.00	3.60	57.60
30 N.	10 W.	39	360.00	5760.00	3.60	57.60
30 N.	10 W.	40	360.00	5760.00	3.60	57.60

16-3

Total number of acres 250.16

Survey Disposed of	By Whom Surveyed	Date of Sale	Amount of Survey	When Surveyed	When Disposed of
Township lands	W. H. Johnson	Jan 21, 1837	1 11 30 2 1/2	1837	1837
Subdivisions	Same		18 57 72 5 1/2		

This plan, Map of Township N^o 30 N. of Range N^o 10 West
Shoemaker & Weston, Michigan, is hereby approved, in the full name
of the Surveyor General of the State of Michigan, and approved
Surveyor General's Office, C. J. Johnson, Surveyor General

L. L. Goodrich