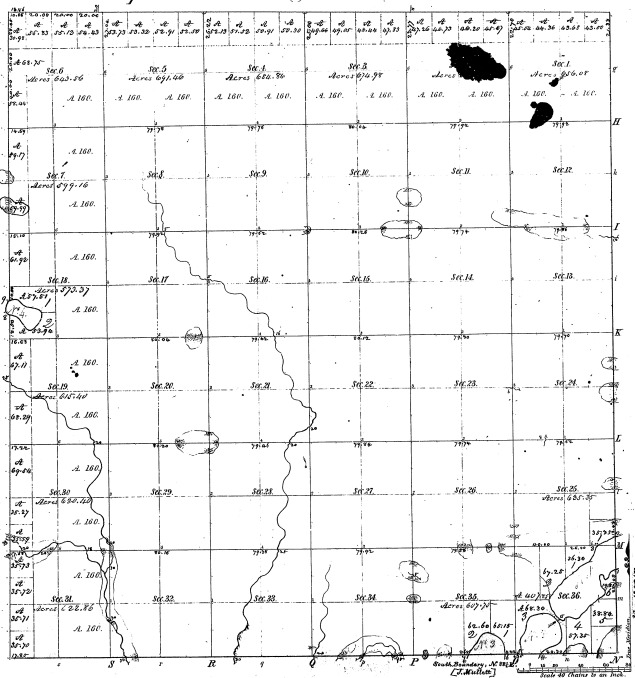


Resurvey
Township N^o 23 N. Range N^o 6 East Mer.



Meanders of		Meanders of	
Patrol	Course	Patrol	Course

22-31

Total number of Acres 20,718.94

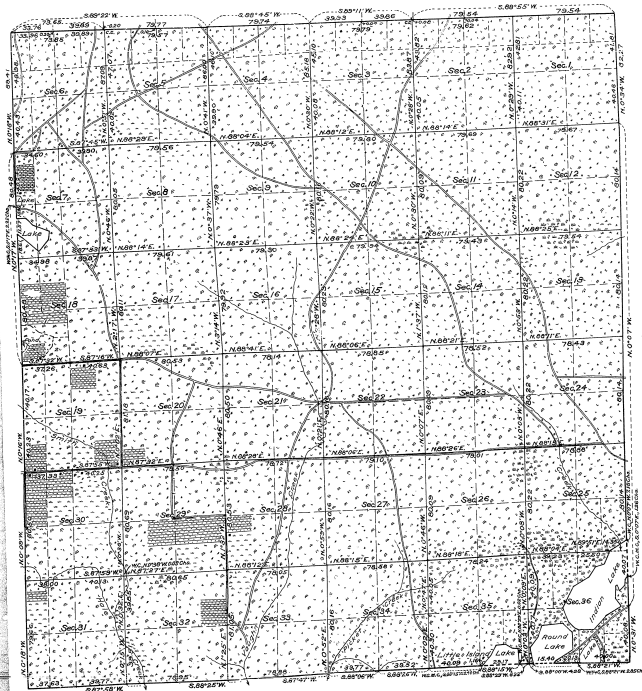
Survey Designated	By Whom Surveyed	Date of Contract	Amount of Survey	When Surveyed	Remarks
Township	Wm. G. Brown	July 10, 1857	20,718.94	1857	
Subdivisions	Wm. G. Brown	Oct. 19, 1857	60.82	1857	

(The above Map of Township N^o 23 N. of Range N^o 6 East of the Principal Meridian, Michigan, is strictly conformable to the field notes of the survey thereof and the officers who have examined and approved the Survey General Office, Goshens, Feb. 15, 1858.

William G. Brown

RESURVEY PLAT
OF
T. 25 N., R. 6 E., Mich. Mer.
MICHIGAN.

22-
22-31^{1/2}



MEMORANDUM.

This plat of the resurvey of T. 25 N., R. 6 E., of the Michigan Meridian, Michigan, delineates a retracement and re-establishment of the lines of the original survey of the township as shown upon the plat approved February 16, 1925, in their true original positions according to the best available evidence of the position of the original plat and those derived in the retracement have been distributed proportionally between accepted corners in accordance with surveying rules.

The Lake shown on the original plat of the township as in Section 18, actually occupies a corresponding position in Section 1, and as so noted in the original field notes of the west boundary of the township.

LEGEND.

Scale: 1 inch = 40 chains.

Surveyed by Guy E. Veal, U. S. Cadastral Engineer, from July 16 to September 6, 1923, inclusive, under special instructions for Group No. 6, Michigan, dated April 6, 1923, issued by the Commissioner of the General Land Office.



The undersigned hereby certifies that the resurvey delineated upon this plat has been executed under his general direction and in accordance with the special instructions, issued pursuant to authority contained in office letter 1024047 MP A D K, dated April 6, 1923, and that the field notes and the plat of the resurvey have been carefully verified.

Denver, Colorado,
August 28, 1924.

William J. Jones
Supervisor of Surveys.

Department of the Interior, ⁷⁷⁴⁰
General Land Office,
Washington, D. C., January 21, 1925.

The above plat of the resurvey of Township 25 North, Range 6 East, of the Michigan Meridian, in the State of Michigan, is strictly conformable to the field notes of the resurvey thereof, on file in this office, which have been examined and approved.

William J. Jones
Commissioner and ex officio
U. S. Survey General for Michigan.