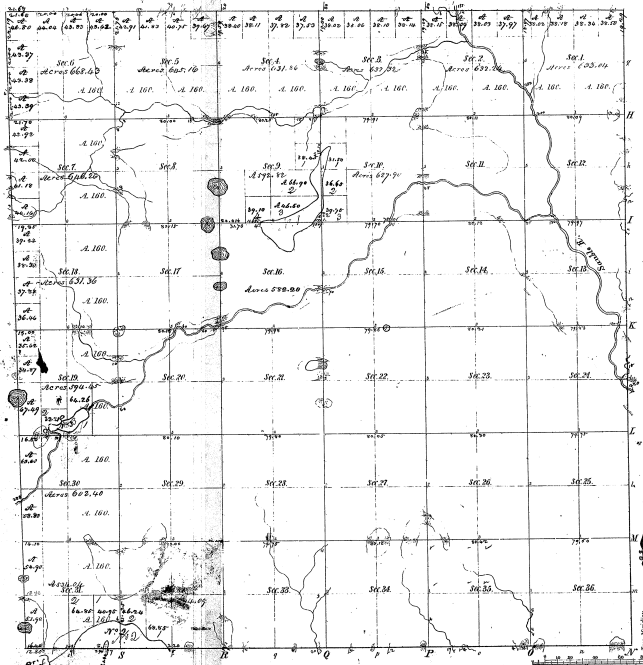


R-Survey  
Township A. 24 N Range A. 5 East Mer.



Mileage in	
North Course	South Course
22.25	22.25

22-25

This map was prepared by the  
 Surveyor General of Michigan  
 from the original records of the  
 Surveyor General of Michigan  
 and is published for the use of the  
 public.

Total number of Acres 22,688.57					
Survey designated	By whom surveyed	Date of last survey	Amount of survey	When surveyed	Mileage run out at the Survey
Township line	John S. Gorman	July 10, 1837	25 27 28	1837	156 1/2
Subdivisions	J. M. A. Gorman	Oct. 17, 1844	20 25 26 27 28	1844	156 1/2

The above map of Township A. 24 N. of Range A. 5 East of the Principal Meridian, Michigan, is truly and correctly surveyed, and approved of the Surveyor General on file in his office and has been examined and approved.

Surveyor General's Office,  
 Lansing, Mich., 5. 16. 1865.

William Johnston  
 Surveyor General



Supplemental Plat

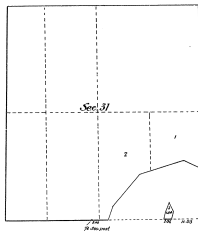
of

Lot 3, Sec. 31, T. 24 N., R. 5 E., Michigan Mer.

MICHIGAN

Scale 20 chs. to an inch.

22-25  
31-33



Note - see field notes for position of W. 1/4  
point and for distance 200

0202

Department of the Interior,  
General Land Office,  
Washington, D.C., Dec. 31, 1907.

I hereby certify that the above is a plat of the subdivisions made in accordance with Section 2219 U.S. Revised Statutes, viz.: Lot 3, Sec. 31, T. 24 N., R. 5 E., Michigan Mer., Michigan, and is strictly conformable to the field notes of survey on file in this office.

R. A. Beecher  
Commissioner of Ex. Office  
U.S. Surveyor General for Michigan