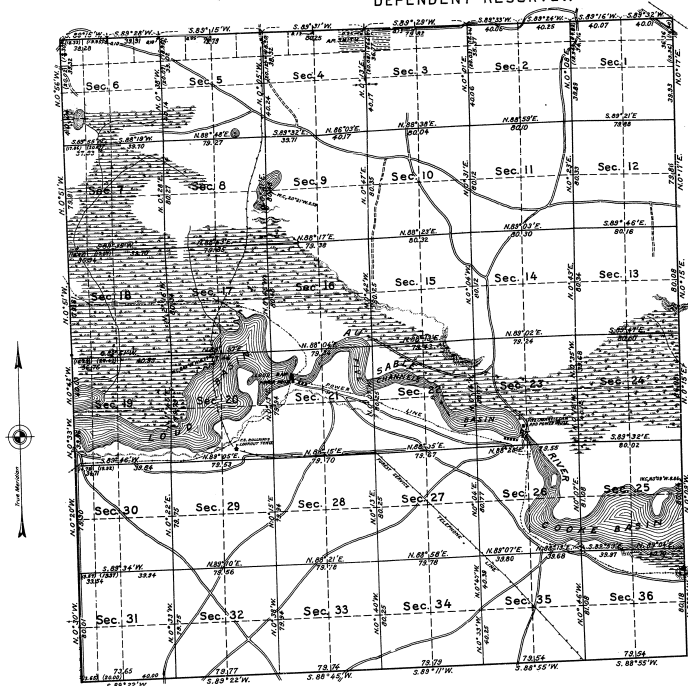


TOWNSHIP N^o 24 NORTH, RANGE N^o 6 EAST OF THE MICHIGAN MERIDIAN, MICHIGAN.
DEPENDENT RESURVEY.



MEMORANDUM.

THIS PLAT OF THE RESURVEY OF TOWNSHIP 24 NORTH, RANGE 6 EAST, MICHIGAN MERIDIAN, MICHIGAN, DELINEATES A RETRACEMENT AND REESTABLISHMENT OF THE LINES OF THE ORIGINAL SURVEY AS SHOWN UPON THE PLAT APPROVED FEBRUARY 11, 1945, IN THEIR TRUE ORIGINAL POSITIONS ACCORDING TO THE BEST AVAILABLE EVIDENCE OF THE POSITION OF THE ORIGINAL CORNERS. ALL DIFFERENCES BETWEEN THE MEASUREMENTS SHOWN ON THE ORIGINAL PLAT AND THOSE DERIVED IN THE RETRACEMENT HAVE BEEN DISTRIBUTED PROPORTIONALLY BETWEEN ACCEPTED CORNERS IN ACCORDANCE WITH SURVEYING RULES. REFERENCE WILL BE MADE TO THE ORIGINAL PLAT FOR THE SHOWING OF AREAS OF THE VARIOUS SUBDIVISIONS.

THE UPLAND IN THIS TOWNSHIP HAS A SCATTERING GROWTH OF JACK PINE AND BLACK OAK, OF LITTLE VALUE. IN THE SWAMPS THERE IS A FAIR GROWTH OF CEDAR AND TAMARACK, MOSTLY YOUNG TIMBER AND OF LITTLE VALUE. A FEW NORWAY AND WHITE PINES ARE ALSO FOUND IN THE TOWNSHIP. THE CONSUMERS POWER COMPANY HAS A FEW SMALL PLANTATIONS OF YOUNG WHITE PINE ALONG THE SOUTH SIDE OF THE AU SABLE RIVER.

Mean Magnetic Declination, Scale: 40 Chains to an Inch. Area Surveyed, Acres.

LINE DESIGNATED BY WHOM SURVEYED	BY	GROUP	DATE	MILEAGE MILES	WHEN SURVEYED BEGIN	COMPLETED
Exterior	GOV. B. VEAL	17	75-85			
Subdivisional	U. S. C. ENGINEER	59	45-58	JUNE 3,	AUG. 25,	
Meander	W. W. BANDY			1927.	1927.	
Miscellaneous	U. S. SURVEYOR.					

Office of U.S. Supervisor of Surveys
Denver, Colorado Feb. 6, 1928
The above plat of Township No. 24 North, Range No. 6 East, of the Michigan Meridian, Michigan is strictly conformable to the field notes of the survey thereof which have been examined and approved.

W. H. D. D.
Supervisor of Surveys

DEPARTMENT OF THE INTERIOR
GENERAL LAND OFFICE
Washington, D. C., May 4, 1928
The survey represented by this plat having been correctly executed in accordance with the requirements of law and the regulations of this office, is hereby accepted.

W. H. D. D.
Acting Assistant Commissioner

24-26-28

24-26