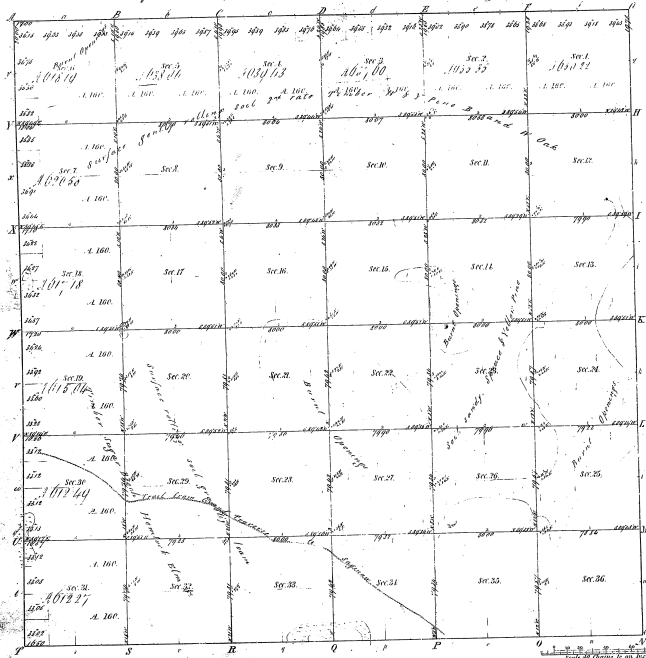


Resurvey
 Township. N^o 25 N Range. N^o 5 W. Ver. Mich.



Witnessed at
 Public Coroner of Michigan, 1872, State, Coroner of Michigan

15-21

Total number of acres **72 822 29**

Survey designated	By whom surveyed	Date of Contract	Amount of Survey	When Surveyed
Survey	John Bonard	May 15 1831	27 58 25	1 st & 2 nd Aug. 1834
Subdivisions	Geo. H. Conover	April 16 1837	39 36 40	1 st & 2 nd June 1837
Final Boundaries	Walter Bennett	May 19 1839	6 27 34	2 nd Aug. 1839

The above map of Township N^o 25 South of Range N^o 5 West of the Principal Meridian Michigan is, as fully conformable to the field notes of the survey thereon on file in the Office which have been examined and approved by

Surveyor General's Office
 Detroit June 25 1853
 Leander Chapman
 Surveyor General