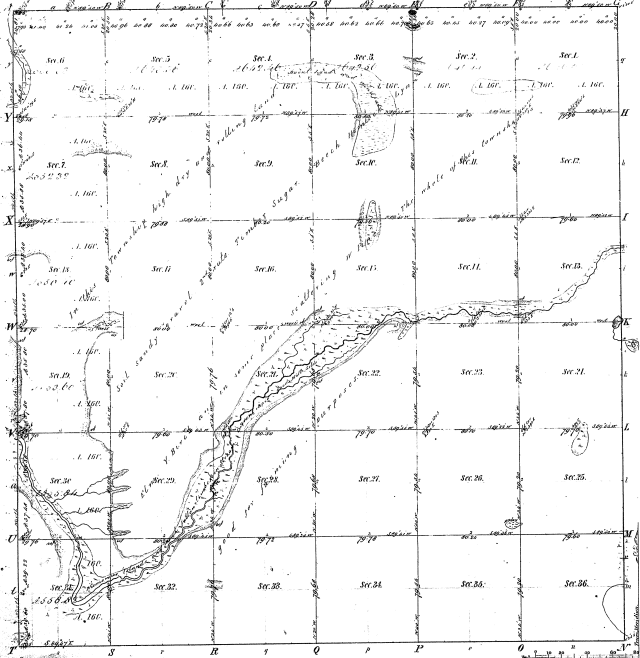


Township. 1° 28' N.
Range. 7° W.
Mer. Mich.

15-10



Measures of
Prob. Courses (1842) Prob. Courses (1842) Prob. Courses (1842)

Note: The blue figures and marks show the position of the old courses and lines.

Total number of Acres 22,336.13

Survey Described	By Whom Surveyed	Date of Contract	Amount of Survey	When Surveyed	How far and by what line
Re-survey	W. H. H. H.	June 26, 1842	22,336.13	1842	By line of 1842
Discovery	David L. L.	April 29, 1842	5,49.94	1842	By line of 1842
Subdivision	Lewis L. L.	April 29, 1842	59.20.46	1842	By line of 1842

The above Map of Township 1° 28' North of Range 7° West of the Principal Meridian Michigan is strictly conformable to the field notes of the survey thereon on file in this office, which have been examined and approved.

Surveyor General's Office,
Detroit Feb. 24, 1852

Wm. H. H.
Supt. Genl.

15-10