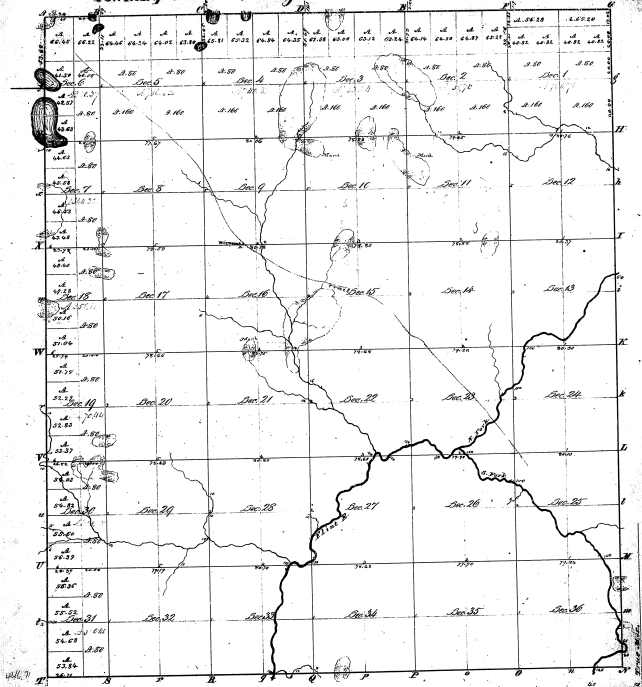


Township N. 9 N. Range N. 9 E. Mer. (Mich.)



278

2-1-8

Surveyor's Name	By whom Surveyed	Date of Contract	Kind of Survey	When Made	When Closed
W. H.
...
...
...

The above Maps of Township N. 9 N. Range N. 9 E. Mer. (Mich.) is hereby confirmed to the field notes of the survey thereof, as filed in this Office, which have been examined and approved by the Surveyor General's Office =
 Wm. T. Williams
 Michigan, Nov. 29, 1858