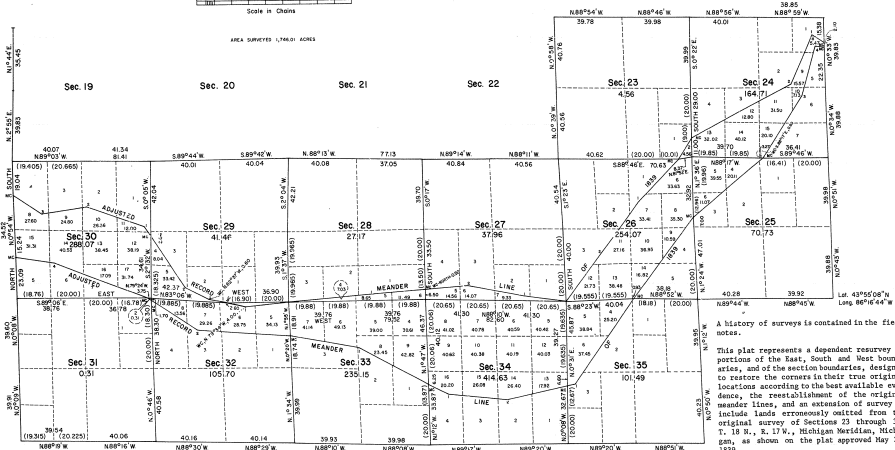
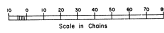


TOWNSHIP 18 NORTH, RANGE 17 WEST, OF THE MICHIGAN MERIDIAN, MICHIGAN

DEPENDENT RESURVEY AND SURVEY



POINT	Bearing	Dist.
N. MC, 819 & 824	N. 58°51' W.	8.31
AP1, 824	S. 36°54' W.	30.18
AP2, 824	S. 63°04' W.	65.44
MC, 823 & 824	S. 34°11' W.	16.73
MC, 823 & 826	S. 45°51' W.	33.83
AP1, 826	S. 38°49' W.	36.79
AP2, 826	S. 40°15' W.	34.79
S27, 826		
S34, 826	N. 82°34' W.	26.85
AP1, 827	N. 75°42' W.	33.19
AP2, 827	S. 88°44' W.	25.38
MC, 827 & 828	S. 88°56' W.	31.84
AP1, 828	S. 84°56' W.	25.93
S29, 828		
S32, 828	S. 84°57' W.	47.05
AP1, 832	N. 79°34' W.	12.16
MC, 829 & 832	N. 79°13' W.	10.54
AP1, 829	N. 82°17' W.	15.69
AP2, 829	N. 88°17' W.	34.70
MC, 829 & 830	N. 85°16' W.	8.18
AP1, 830	N. 70°26' W.	34.68
AP2, 830	S. 82°02' W.	26.84
AP3, 830	N. 40°58' W.	19.90
N. MC, 825 & 830		

POINT	Bearing	Dist.	POINT	Bearing	Dist.
S. MC, 825 & 830	S. 81°17' E.	21.97	AP1, 834	S. 69°17' E.	57.56
ADN, 830	MC, 830 & 831	4.40	AP2, 834	S. 57°04' E.	4.40
MC, 831 & 832	MC, 831 & 832	31.29	AP1, 832	S. 37°18' E.	31.29
AP1, 832	S. 84°14' E.	53.53	MC, 832 & 833	S. 79°02' E.	41.36
AP1, 833	S. 63°44' E.	44.35	AP1, 833	S. 66°28' E.	14.15
MC, 833 & 834	S. 84°51' E.	34.27	AP1, 834	N. 78°39' E.	34.35
AP1, 834	N. 88°58' E.	4.85	MC, 834 & 835	N. 81°00' E.	4.85
AP1, 835	N. 73°18' E.	58.38	AP1, 835	N. 81°00' E.	58.38
MC, 835 & 835	N. 38°41' E.	59.22	MC, 825 & 826	N. 54°09' E.	54.14
MC, 825 & 826	N. 33°17' E.	41.74	AP1, 825	N. 17°11' E.	38.92
AP1, 825	S. 88°04' E.	4.35	N. MC, 819 & 824		
AP4, 824					

UNITED STATES DEPARTMENT OF THE INTERIOR
 BUREAU OF LAND MANAGEMENT
 Washington, D. C. September 22, 1978

This plat is strictly conformable to the approved field notes, and the survey, having been correctly executed in accordance with the requirements of law and the regulations of this Bureau, is hereby accepted.

For the Director

Bernard W. Johns

Chief, Division of Cadastral Survey

A history of surveys is contained in the field notes.

This plat represents a dependent resurvey of portions of the East, South and West boundaries, and of the section boundaries, designed to restore the corners to their true original locations according to the best available evidence, the reestablishment of the original meander lines, and an extension of survey to include lands erroneously omitted from the original survey of Sections 23 through 25, T. 18 N., R. 17 W., Michigan Meridian, Michigan, as shown on the plat approved May 29, 1939.

The position of the original meander courses of Pere Marquette Lake is shown by two irregular lines with numbered angle points. These lines as originally reported were grossly in error, and have therefore been marked as "meander lines", with the directions and lengths of the several courses adjusted to the reestablished position of the original survey.

Except as shown hereon, the lottings and areas are as shown on the plat approved May 29, 1939.

These surveys were executed by Barry G. Krebs, Cadastral Surveyor, from May 5 through September 3, 1974, under Special Instructions for Group No. 751, Michigan, dated April 30, 1974.

9-6(2)