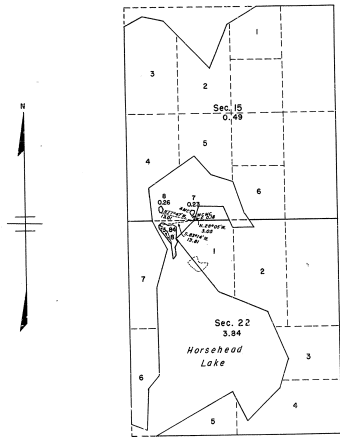




12-34  
②

TOWNSHIP 15 NORTH, RANGE 8 WEST OF THE MICHIGAN MERIDIAN, MICHIGAN  
SURVEY OF THREE ISLANDS, SECTIONS 15 AND 22



0 5 10 20 30 40 50 60  
Scale in Chains

Area Surveyed: 4.33 Acres

This plat represents the survey of three islands in Horsehead Lake, secs. 15 and 22, which were not included in the original survey of the township which is represented on the plat approved July 4, 1839.

Surveyed by Hugh B. Crawford, Cadastral Engineer, from June 18 to 20, 1956, under Special Instructions for Group 65, Michigan, dated June 4, 1956.

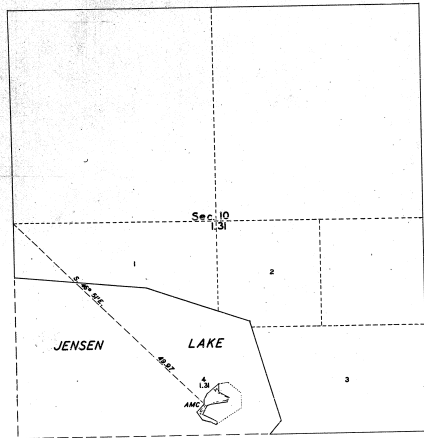
UNITED STATES DEPARTMENT OF THE INTERIOR  
BUREAU OF LAND MANAGEMENT  
Washington, D. C. December 21, 1956

This plat is strictly conformable to the approved field notes, and the survey, having been correctly executed in accordance with the requirements of law and the regulations of this Bureau, is hereby accepted.

For the Director  
*Don S. Harrington*  
Cadastral Engineering Staff Officer

TOWNSHIP 15 NORTH, RANGE 8 WEST, MICHIGAN MERIDIAN, MICHIGAN  
SURVEY OF ISLAND, IN SECTION 10

12-24-0



This plat represents the survey of an island in Jensen Lake which was not included in the original survey of the township which is represented on the plat approved March 4, 1839.

Surveyed by Hugh B. Crawford, Cadastral Surveyor, from July 16 to 18, 1907, under Special Instructions for Group 66, Michigan, dated May 23, 1907.

UNITED STATES DEPARTMENT OF THE INTERIOR  
BUREAU OF LAND MANAGEMENT  
Washington, D. C. December 30, 1907

This plat is strictly conformable to the approved field notes, and the survey, having been correctly executed in accordance with the requirements of law and the regulations of this Bureau, is hereby accepted.

For the Director

A handwritten signature in cursive script, appearing to read 'Donald Clement'.

Acting Cadastral Engineering Staff Officer