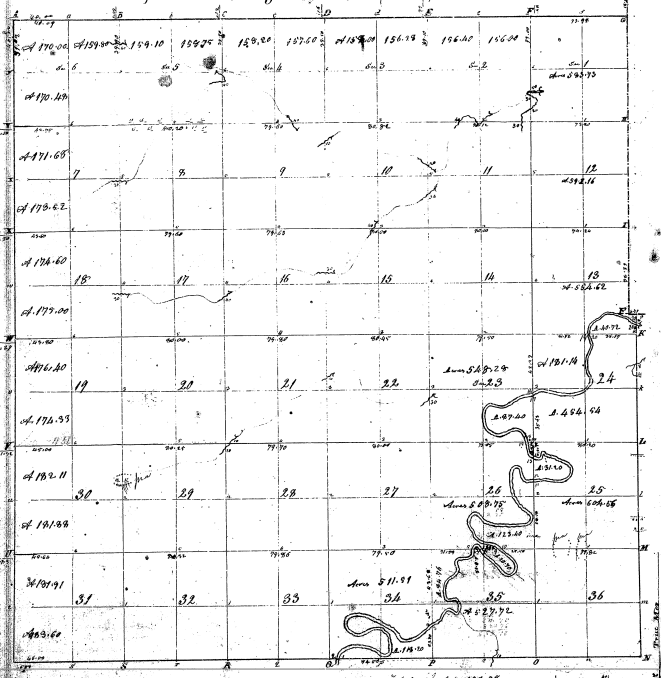


Township N^o VI South, Range N^o VI East of Mer. (S. 1/4 Sec. 1)

49



31-27

31-27

Total 511.35

Present to a contract with an intention from County Office, January 1891, of the United States, having 511.35
 day of April 1891. I have examined and laid out and changed the above line of the within township, and I do hereby certify that it
 is a true and correct line, and is as represented on said plat and described in the office notes, and
 is in accordance with the State into the January 1891.

Witness my hand this 20th day of April 1891.

L. C. Galt