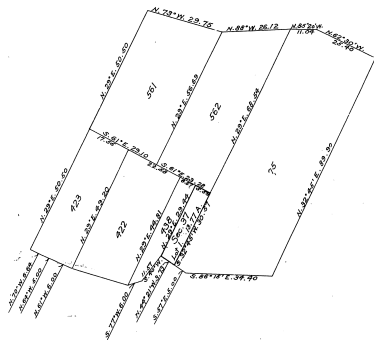


31-31
31-31

SUPPLEMENTAL PLAT
Lot 1, Section 37, T. 7 S., R. 9 E., Michigan Mer.
MICHIGAN.

Scale: 20 chains to an inch.



1878
7899

Department of the Interior
General Land Office,
Washington, D. C., March 10, 1924.

This supplemental plat showing lot 1, Sec. 37, T. 7 S., R. 9 E., Michigan Meridian, Michigan, is based on the plat dated May 29, 1850, and is made for the purpose of obtaining area and legal description of the entry of William Bolles, Merquette 05070; and is hereby approved.

William Smy
Commissioner and ex officio
U. S. Surveyor General for Michigan.