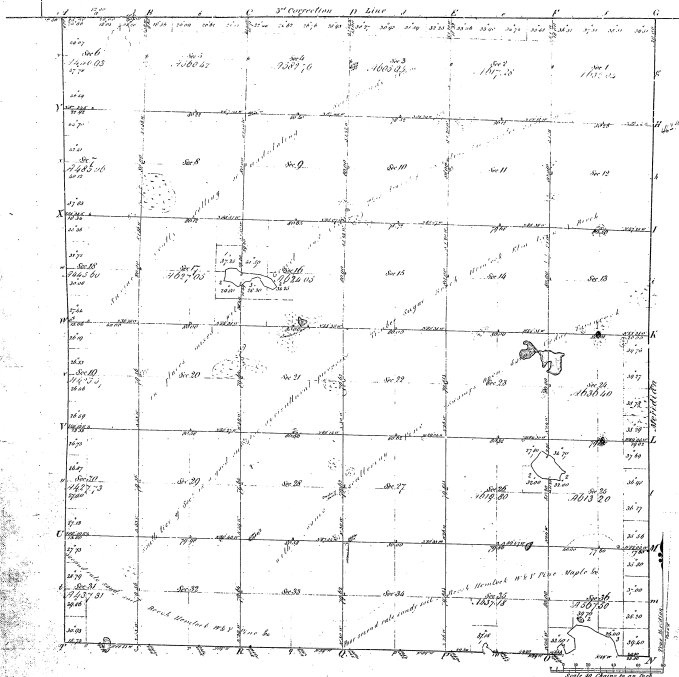


Resurvey  
Township N<sup>o</sup> 30 N Range N<sup>o</sup> 1 W Mer. Mich.



Section	Acres	Owner
1	1000.00	John C. Brown
2	1000.00	John C. Brown
3	1000.00	John C. Brown
4	1000.00	John C. Brown
5	1000.00	John C. Brown
6	1000.00	John C. Brown
7	1000.00	John C. Brown
8	1000.00	John C. Brown
9	1000.00	John C. Brown
10	1000.00	John C. Brown
11	1000.00	John C. Brown
12	1000.00	John C. Brown
13	1000.00	John C. Brown
14	1000.00	John C. Brown
15	1000.00	John C. Brown
16	1000.00	John C. Brown
17	1000.00	John C. Brown
18	1000.00	John C. Brown
19	1000.00	John C. Brown
20	1000.00	John C. Brown
21	1000.00	John C. Brown
22	1000.00	John C. Brown
23	1000.00	John C. Brown
24	1000.00	John C. Brown
25	1000.00	John C. Brown
26	1000.00	John C. Brown
27	1000.00	John C. Brown
28	1000.00	John C. Brown
29	1000.00	John C. Brown
30	1000.00	John C. Brown
31	1000.00	John C. Brown
32	1000.00	John C. Brown
33	1000.00	John C. Brown
34	1000.00	John C. Brown
35	1000.00	John C. Brown
36	1000.00	John C. Brown

14-4

Total number of Acres 36000.00

Range Surveyed	By Whom Surveyed	Date of Contract	Number of Sections	When Surveyed
Range 1 West	George W. Allen	Sept 27, 1856	36	1856
Range 2 West	George W. Allen	Sept 27, 1856	36	1856
Range 3 West	George W. Allen	Sept 27, 1856	36	1856
Range 4 West	George W. Allen	Sept 27, 1856	36	1856
Range 5 West	George W. Allen	Sept 27, 1856	36	1856
Range 6 West	George W. Allen	Sept 27, 1856	36	1856
Range 7 West	George W. Allen	Sept 27, 1856	36	1856
Range 8 West	George W. Allen	Sept 27, 1856	36	1856
Range 9 West	George W. Allen	Sept 27, 1856	36	1856
Range 10 West	George W. Allen	Sept 27, 1856	36	1856
Range 11 West	George W. Allen	Sept 27, 1856	36	1856
Range 12 West	George W. Allen	Sept 27, 1856	36	1856
Range 13 West	George W. Allen	Sept 27, 1856	36	1856
Range 14 West	George W. Allen	Sept 27, 1856	36	1856
Range 15 West	George W. Allen	Sept 27, 1856	36	1856
Range 16 West	George W. Allen	Sept 27, 1856	36	1856
Range 17 West	George W. Allen	Sept 27, 1856	36	1856
Range 18 West	George W. Allen	Sept 27, 1856	36	1856
Range 19 West	George W. Allen	Sept 27, 1856	36	1856
Range 20 West	George W. Allen	Sept 27, 1856	36	1856
Range 21 West	George W. Allen	Sept 27, 1856	36	1856
Range 22 West	George W. Allen	Sept 27, 1856	36	1856
Range 23 West	George W. Allen	Sept 27, 1856	36	1856
Range 24 West	George W. Allen	Sept 27, 1856	36	1856
Range 25 West	George W. Allen	Sept 27, 1856	36	1856
Range 26 West	George W. Allen	Sept 27, 1856	36	1856
Range 27 West	George W. Allen	Sept 27, 1856	36	1856
Range 28 West	George W. Allen	Sept 27, 1856	36	1856
Range 29 West	George W. Allen	Sept 27, 1856	36	1856
Range 30 West	George W. Allen	Sept 27, 1856	36	1856
Range 31 West	George W. Allen	Sept 27, 1856	36	1856
Range 32 West	George W. Allen	Sept 27, 1856	36	1856
Range 33 West	George W. Allen	Sept 27, 1856	36	1856
Range 34 West	George W. Allen	Sept 27, 1856	36	1856
Range 35 West	George W. Allen	Sept 27, 1856	36	1856
Range 36 West	George W. Allen	Sept 27, 1856	36	1856

The above list of Township N<sup>o</sup> 30 N. of Range 1<sup>st</sup> West of the Principal Meridian Michigan is fully conformable to the full notes of the survey thereof on file in this Office which have been examined and approved.

Surveyor General Office  
St. Louis August 2, 1857