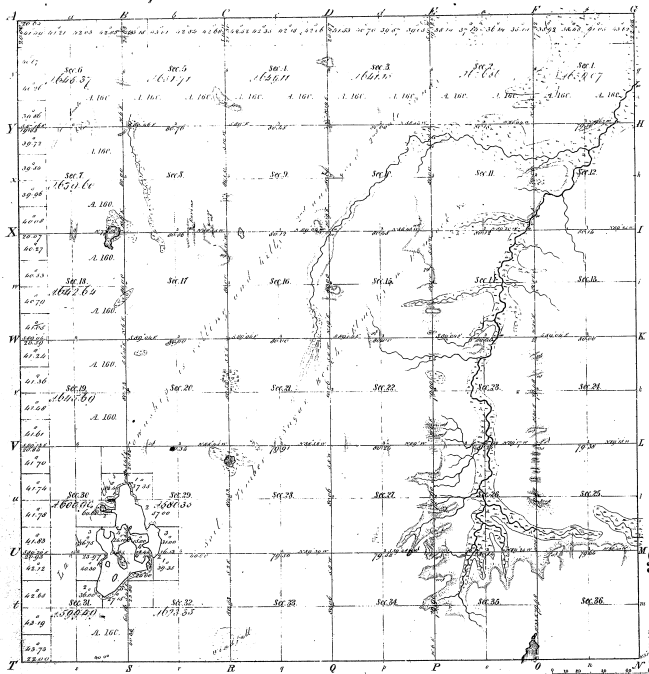


Township 1° 31' N. Range 1° 3' W. Mer. Mich.



Total number of Acres 22007.00

Survey Designated	By Whom Surveyed	Date of Contract	Amount of Survey	When Surveyed	When Made and at the Service of
Original	W. A. Smith	June 20, 1856	22,007.00	1856	1856
Subdivisions	W. A. Smith	April 19, 1856	66.28	66	2-28-56

The above copy of Township 1° 31' North of Range 1° 3' West of the Principal Meridian 2 Mich., as a whole approved by the field notes of the survey being on file in the office which has been measured and approved.

Surveyor General's Office,
Detroit Dec. 23, 1856

Charles A. Biddle Surveyor General

Menters, et

Public Surveyors 1854 State Census 1854 State Census

Acres to be	2.24
to do 1/4 Sec. 10	1.12
to do 1/4 Sec. 11	1.12
to do 1/4 Sec. 12	1.12
to do 1/4 Sec. 13	1.12
to do 1/4 Sec. 14	1.12
to do 1/4 Sec. 15	1.12
to do 1/4 Sec. 16	1.12
to do 1/4 Sec. 17	1.12
to do 1/4 Sec. 18	1.12
to do 1/4 Sec. 19	1.12
to do 1/4 Sec. 20	1.12
to do 1/4 Sec. 21	1.12
to do 1/4 Sec. 22	1.12
to do 1/4 Sec. 23	1.12
to do 1/4 Sec. 24	1.12
to do 1/4 Sec. 25	1.12
to do 1/4 Sec. 26	1.12
to do 1/4 Sec. 27	1.12
to do 1/4 Sec. 28	1.12
to do 1/4 Sec. 29	1.12
to do 1/4 Sec. 30	1.12
to do 1/4 Sec. 31	1.12
to do 1/4 Sec. 32	1.12
to do 1/4 Sec. 33	1.12
to do 1/4 Sec. 34	1.12
to do 1/4 Sec. 35	1.12
to do 1/4 Sec. 36	1.12
to do 1/4 Sec. 37	1.12
to do 1/4 Sec. 38	1.12
to do 1/4 Sec. 39	1.12
to do 1/4 Sec. 40	1.12
to do 1/4 Sec. 41	1.12
to do 1/4 Sec. 42	1.12
to do 1/4 Sec. 43	1.12
to do 1/4 Sec. 44	1.12
to do 1/4 Sec. 45	1.12
to do 1/4 Sec. 46	1.12
to do 1/4 Sec. 47	1.12
to do 1/4 Sec. 48	1.12
to do 1/4 Sec. 49	1.12
to do 1/4 Sec. 50	1.12
to do 1/4 Sec. 51	1.12
to do 1/4 Sec. 52	1.12
to do 1/4 Sec. 53	1.12
to do 1/4 Sec. 54	1.12
to do 1/4 Sec. 55	1.12
to do 1/4 Sec. 56	1.12
to do 1/4 Sec. 57	1.12
to do 1/4 Sec. 58	1.12
to do 1/4 Sec. 59	1.12
to do 1/4 Sec. 60	1.12
to do 1/4 Sec. 61	1.12
to do 1/4 Sec. 62	1.12
to do 1/4 Sec. 63	1.12
to do 1/4 Sec. 64	1.12
to do 1/4 Sec. 65	1.12
to do 1/4 Sec. 66	1.12
to do 1/4 Sec. 67	1.12
to do 1/4 Sec. 68	1.12
to do 1/4 Sec. 69	1.12
to do 1/4 Sec. 70	1.12
to do 1/4 Sec. 71	1.12
to do 1/4 Sec. 72	1.12
to do 1/4 Sec. 73	1.12
to do 1/4 Sec. 74	1.12
to do 1/4 Sec. 75	1.12
to do 1/4 Sec. 76	1.12
to do 1/4 Sec. 77	1.12
to do 1/4 Sec. 78	1.12
to do 1/4 Sec. 79	1.12
to do 1/4 Sec. 80	1.12
to do 1/4 Sec. 81	1.12
to do 1/4 Sec. 82	1.12
to do 1/4 Sec. 83	1.12
to do 1/4 Sec. 84	1.12
to do 1/4 Sec. 85	1.12
to do 1/4 Sec. 86	1.12
to do 1/4 Sec. 87	1.12
to do 1/4 Sec. 88	1.12
to do 1/4 Sec. 89	1.12
to do 1/4 Sec. 90	1.12
to do 1/4 Sec. 91	1.12
to do 1/4 Sec. 92	1.12
to do 1/4 Sec. 93	1.12
to do 1/4 Sec. 94	1.12
to do 1/4 Sec. 95	1.12
to do 1/4 Sec. 96	1.12
to do 1/4 Sec. 97	1.12
to do 1/4 Sec. 98	1.12
to do 1/4 Sec. 99	1.12
to do 1/4 Sec. 100	1.12

Amount of Acres 22007.00

18-36

18-36