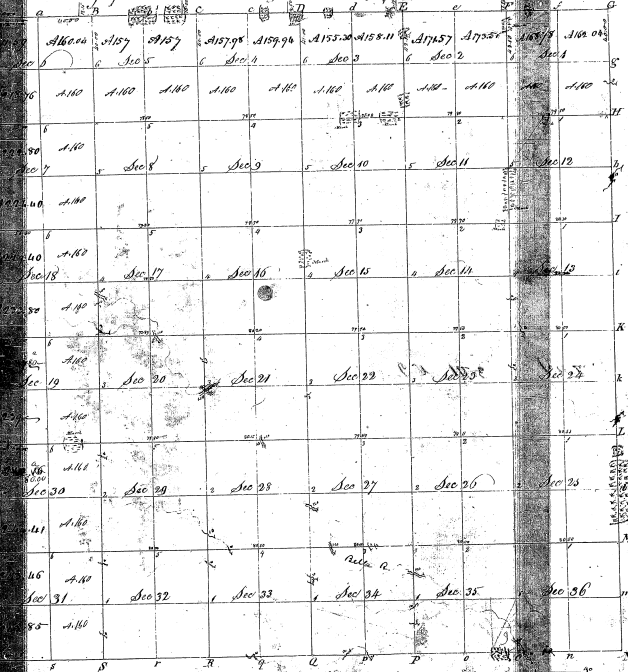


Township N° VI North Range N° XIV East of Mec Mich. Ter

443



26-22

26-22

sent to a boatman with a instructions from Edward Tiffin Esq. Surveyor General of the United States
 date the twentieth day of November 1816 I have acknowledged said out & returned the same directed from
 and hereby certify that it had such marks and bounds both natural and artificial as are referred to
 first and directed in the plat made thereof and returned with this plat to the Surveyor
 at Office County of Mec 25th day of Sept 1817
 William Weston Esq.